

Product datasheet for **TP323693L**

HEPACAM (NM_152722) Human Recombinant Protein

Product data:

Product Type:	Recombinant Proteins
Description:	Recombinant protein of human hepatocyte cell adhesion molecule (HEPACAM), 1 mg
Species:	Human
Expression Host:	HEK293T
Expression cDNA Clone or AA Sequence:	>RC223693 representing NM_152722 Red =Cloning site Green =Tags(s)
	<p>MKRREGALSRASRALRLAPFVYLLLIQTDPLEGVNITSPVRLIHGTVGKSALLSVQYSSTSSDRPVVKWQ LKRDKPVTWVQSIGTEVIGTLRPDYRDRIRLFENGSLLLSDLQLADEGTYEVEISITDDTFTGKTNLT VDVPISRQVLVASTTVLELSEAFNLNCSHENGTKPSYTWLKDGP LLNDSRMLLSPDQKVLITRVLME DDDLYS CVENPISQGRSLPVKITVYRRSSLYIILSTGGIFLLVTLVTVCAWKPSKRKQKKLEKQNSLE YMDQNDDRLKPEADTLPRSGEQERKNPMALYILKDKDSPETEENPAPEPRSA TEPPGGYSVSPAVPGRS PGLPIRSARRYPRSPARSPATGRTHSSPPRAPSSPGRSRSASRTLRTAGVHIIREQDEAGPVEISA</p> <p>TRTRPLEQKLISEEDLAANDILDYKDDDDKV</p>
Tag:	C-Myc/DDK
Predicted MW:	45.8 kDa
Concentration:	>0.05 µg/µL as determined by microplate BCA method
Purity:	> 80% as determined by SDS-PAGE and Coomassie blue staining
Buffer:	25 mM Tris-HCl, 100 mM glycine, pH 7.3, 10% glycerol
Preparation:	Recombinant protein was captured through anti-DDK affinity column followed by conventional chromatography steps.
Note:	For testing in cell culture applications, please filter before use. Note that you may experience some loss of protein during the filtration process.
Storage:	Store at -80°C.
Stability:	Stable for 12 months from the date of receipt of the product under proper storage and handling conditions. Avoid repeated freeze-thaw cycles.
RefSeq:	NP_689935
Locus ID:	220296



[View online »](#)

UniProt ID: [Q14CZ8](#)

RefSeq Size: 3258

Cytogenetics: 11q24.2

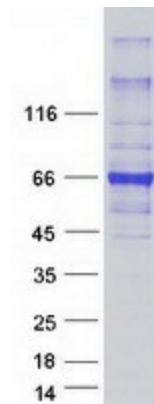
RefSeq ORF: 1248

Synonyms: GlialCAM; HEPN1; MLC2A; MLC2B

Summary: The protein encoded by this gene is a single-pass type I membrane protein that localizes to the cytoplasmic side of the cell membrane. The encoded protein acts as a homodimer and is involved in cell motility and cell-matrix interactions. The expression of this gene is downregulated or undetectable in many cancer cell lines, so this may be a tumor suppressor gene. [provided by RefSeq, Jul 2011]

Protein Families: Druggable Genome, Transmembrane

Product images:



Coomassie blue staining of purified HEPACAM protein (Cat# [TP323693]). The protein was produced from HEK293T cells transfected with HEPACAM cDNA clone (Cat# [RC223693]) using MegaTran 2.0 (Cat# [TT210002]).