

Product datasheet for **TP323693**

HEPACAM (NM_152722) Human Recombinant Protein

Product data:

Product Type: Recombinant Proteins
Description: Recombinant protein of human hepatocyte cell adhesion molecule (HEPACAM), 20 µg
Species: Human
Expression Host: HEK293T
Expression cDNA Clone or AA Sequence: >Peptide sequence encoded by RC223693
Blue=ORF **Red**=Cloning site **Green**=Tag(s)

MKRREGALSRRASRALRLAPFVYLLLIQTDPLEGVNITSPVRLIHGTVGKSALLSVQYSSTSSDRPVVKW
QLKRDKPVTWVQSIGTEVIGTLRPDYRDRIRLFENGSLLLSDLQLADEGTYEVEISITDDTFTGEKTIN
LTVDVPISRQVLVASTTVLELSEAFNLNCSHENGTKPSYTWLKDGPPLNDSRMLLSPDQKVLITRIV
LMEDDDLYSCMVENPISQGRSLPVKITVYRRSSLYIILSTGGIFLLVTLVVCACWKPSKRKQKKLEKQ
NSLEYMDQNDDRLKPEADTLPRSGEQERKNPMALYILKDKDSPETEENPAPEPRSAPEGPPGYSVSPA
VPGRSPGLPIRSARRYPRSPARSPATGRTHSSPPRAPSSPGRSRSASRTLRTAGVHIIREQDEAGPVEI
SA
TRTRPLEQKLISEEDLAANDILDYKDDDDKV

Recombinant protein using RC223693 also available, [TP323693](#)

Tag: C-Myc/DDK
Predicted MW: 45.8 kDa
Concentration: >0.05 µg/µL as determined by microplate BCA method
Purity: > 80% as determined by SDS-PAGE and Coomassie blue staining
Buffer: 25 mM Tris-HCl, 100 mM glycine, pH 7.3, 10% glycerol
Preparation: Recombinant protein was captured through anti-DDK affinity column followed by conventional chromatography steps.
Note: For testing in cell culture applications, please filter before use. Note that you may experience some loss of protein during the filtration process.
Storage: Store at -80°C.
Stability: Stable for 12 months from the date of receipt of the product under proper storage and handling conditions. Avoid repeated freeze-thaw cycles.



[View online >](#)

RefSeq: [NP_689935](#)

Locus ID: 220296

UniProt ID: [Q14CZ8](#)

RefSeq Size: 3258

Cytogenetics: 11q24.2

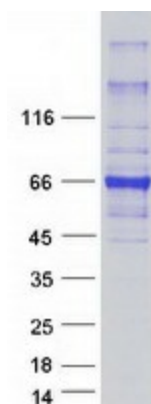
RefSeq ORF: 1248

Synonyms: GlialCAM; HEPN1; MLC2A; MLC2B

Summary: The protein encoded by this gene is a single-pass type I membrane protein that localizes to the cytoplasmic side of the cell membrane. The encoded protein acts as a homodimer and is involved in cell motility and cell-matrix interactions. The expression of this gene is downregulated or undetectable in many cancer cell lines, so this may be a tumor suppressor gene. [provided by RefSeq, Jul 2011]

Protein Families: Druggable Genome, Transmembrane

Product images:



Coomassie blue staining of purified HEPACAM protein (Cat# TP323693). The protein was produced from HEK293T cells transfected with HEPACAM cDNA clone (Cat# [RC223693]) using MegaTran 2.0 (Cat# [TT210002]).