

Product datasheet for **TP323681**

CRTAC1 (NM_018058) Human Recombinant Protein

Product data:

Product Type:	Recombinant Proteins
Description:	Recombinant protein of human cartilage acidic protein 1 (CRTAC1), 20 µg
Species:	Human
Expression Host:	HEK293T
Expression cDNA Clone or AA Sequence:	>RC223681 representing NM_018058 Red =Cloning site Green =Tags(s)

MAPSADPGMSRMLPFLLLLWFLPITEGSQRAEPMFTAVTNSVLPPDYDSNPTQLNYGVAVTDVDHDGDF
E
IVVAGYNGPNLVLYKYDRAQKRLVNIADVDERSSPYALRDRQNAIGVTACDIDGDGREEIYFLNTNNAFS
GVATYTDKLFKFRNNRWEDILSDEVNVARGVASLFAGRSVACVDRKSGRYSIYANYAYGNVGPDALIE
MDPEASDLSRGILALRDVAEAGVSKYTGGRGVSVGPILSSASDIFCDNENGNPFLFHNRGDGTVDAA
ASAGVDDPHQHGRGVALADFNRDGKVDIVYGNWNGPHRLYLQMSTHGKVRFRDIASPKFSMPSPVRTV
IT
ADFDNDQELEIFFNNIAYRSSANRLFRVIRREHGDPLIEELNPGDALEPEGRGTGGVWTFDFDGDGMLDL
ILSHGESMAQPLSVFRGNQGFNNNWLVRVPRTRFGAFARGAKVWLYTKKSGAHLRIIDGGSGYLCEMEPV
AHFGLGKDEASSVEVTWPDGKMVSRNVASGEMNSVLEILYPRDEDTLQDPAPLECGQGF5QQENGHCM
DT
NECIQFPFVCPRDKPVCVNTYGSYRCRTNKKCSRGYEPNEDGTACVGTGQSPGPRPTTPTAAAATAAAA
AAAGAATAAPVLVDGDLNLGSVVKESCEPSC

TRTRPLEQKLISEEDLAANDILDYKDDDDKV

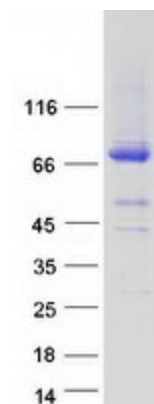
Tag:	C-Myc/DDK
Predicted MW:	71.2 kDa
Concentration:	>0.05 µg/µL as determined by microplate BCA method
Purity:	> 80% as determined by SDS-PAGE and Coomassie blue staining
Buffer:	25 mM Tris-HCl, 100 mM glycine, pH 7.3, 10% glycerol
Preparation:	Recombinant protein was captured through anti-DDK affinity column followed by conventional chromatography steps.



[View online »](#)

Note:	For testing in cell culture applications, please filter before use. Note that you may experience some loss of protein during the filtration process.
Storage:	Store at -80°C.
Stability:	Stable for 12 months from the date of receipt of the product under proper storage and handling conditions. Avoid repeated freeze-thaw cycles.
RefSeq:	NP_060528
Locus ID:	55118
UniProt ID:	Q9NQ79
RefSeq Size:	2889
Cytogenetics:	10q24.2
RefSeq ORF:	1983
Synonyms:	ASPIC; ASPIC1; CEP-68; CEP68; LOTUS
Summary:	This gene encodes a glycosylated extracellular matrix protein that is found in the interterritorial matrix of articular deep zone cartilage. This protein is used as a marker to distinguish chondrocytes from osteoblasts and mesenchymal stem cells in culture. The presence of FG-GAP motifs and an RGD integrin-binding motif suggests that this protein may be involved in cell-cell or cell-matrix interactions. Copy number alterations in this gene have been observed in neurofibromatosis type 1-associated glomus tumors. Alternative splicing results in multiple transcript variants. [provided by RefSeq, Aug 2011]

Product images:



Coomassie blue staining of purified CRTAC1 protein (Cat# TP323681). The protein was produced from HEK293T cells transfected with CRTAC1 cDNA clone (Cat# [RC223681]) using MegaTran 2.0 (Cat# [TT210002]).