

Product datasheet for **TP323680M**

KCC2 (SLC12A5) (NM_020708) Human Recombinant Protein

Product data:

Product Type:	Recombinant Proteins
Description:	Purified recombinant protein of Human solute carrier family 12 (potassium/chloride transporter), member 5 (SLC12A5), transcript variant 2, with C-terminal MYC/DDK tag, expressed in HEK293 cells, 100 µg
Species:	Human
Expression Host:	HEK293
Expression cDNA	>RC223680 representing NM_020708
Clone or AA Sequence:	Red=Cloning site Green=Tags(s)

MLNNLTDCEGDGGANPGDGNPKESSPFINSTDTEKGKEYDGKNMALFEEEMDTSPMVSSLLSGLANYTN
LPQGSREHEEAENNEGGKKKPVQAPRMGTFMGVYLPCLQNFVILFLRLTWVVGIAGIMESFCMVFICC
SCTMLTAISMSAIATNGVVPAGGSYIMISRSLGPEFGGAVGLCFYLGTTFAGAMYILGTIEILLAYLFP
MAIFKAEDASGEAAAMLNMRVYGTCVLTCMATVVFVGVKYNKFALVFLGCVLSILAIYAGVIKSAFD
PPNFPICLLGNRTLNRHGFVCAKLAWEGNETVTRLWGLFCSSRFLNATCDEYFTRNNVTEIQGIPGAA
SGLIKENLWSSYLTKGVIVERSGMTSVGLADGTPIDMDHPYVFSDMTSYFTLLVGIYFPSVTGIMAGSNR
SGDLRDAQSIPTGTILAIATTSVAVYISSVWLFACIEGVVLRDKFGEAVNGNLVVGTLAWPSPWVIVIG
SFFSTCGAGLQSLTGAPRLLQAISRDLGIVPFLQVFGHGKANGEPTWALLLTACICEIGILIASLDEVAPI
LSMFFLMCYMFVNLACAVQTLRLTPNWRPRFRYYHWTL SFLGMSLCLALMFICSWYYALVAMLIAGLIYK
YIEYRGAKEWGDGIRGLSLSAARYALLRLEEGPPHTKNWRPQLLVLRVDQDQNVVHPQLLSLTSQLKA
GKGLTIVGSVLEGTFLFNHPQAQRAEESIRRLMEAEKVKGFCQWISSNLRDGVSHLIQSGGLGGLQHNT
VLVGWPRNWRQKEDHQTWRNFIELVRETTAGHLALLVTKNVSMFPGNPERFSEGSIDVWWIVHDGGMLML
LPFLLRHHKVVWRKCKMRIFTVAQMDDNSIQMKKDLTFLYHLRITAEVEVEMHESDISAYTYEKTLMVE
QRSQILKQMHLTKNEREREIQSITDESRGSIRRNPNANRLRLNVPEETAGDSEEKPEEEVQLIHDQSAP
SCPSSPSPGEEPEGEGETDPEKVHLTWTKDKSVAEKNKGPSPVSSSEGKIDFFSMKPEWENLNQSNVRRM
HTAVRLNEVIVKSRDAKLVLNMPGPPRNRNGDENYMEFLEVLTEHLDRVMLVRGGGREVITYS

TRTRPLEQKLISEEDLAANDILDYKDDDDKV

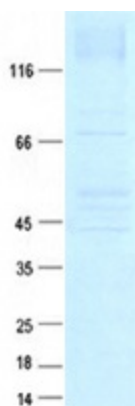
Tag:	C-Myc/DDK
Predicted MW:	123.3 kDa
Concentration:	>0.05 µg/µL as determined by microplate BCA method
Purity:	> 80% as determined by SDS-PAGE and Coomassie blue staining



[View online »](#)

Buffer:	25 mM Tris-HCl, 100 mM glycine, pH 7.3, 10% glycerol
Preparation:	Recombinant protein was captured through anti-DDK affinity column followed by conventional chromatography steps.
Note:	For testing in cell culture applications, please filter before use. Note that you may experience some loss of protein during the filtration process.
Storage:	Store at -80°C.
Stability:	Stable for 12 months from the date of receipt of the product under proper storage and handling conditions. Avoid repeated freeze-thaw cycles.
RefSeq:	NP_065759
Locus ID:	57468
UniProt ID:	Q9H2X9
RefSeq Size:	6059
Cytogenetics:	20q13.12
RefSeq ORF:	3348
Synonyms:	DEE34; EIEE34; EIG14; hKCC2; KCC2
Summary:	K-Cl cotransporters are proteins that lower intracellular chloride concentrations below the electrochemical equilibrium potential. The protein encoded by this gene is an integral membrane K-Cl cotransporter that can function in either a net efflux or influx pathway, depending on the chemical concentration gradients of potassium and chloride. The encoded protein can act as a homomultimer, or as a heteromultimer with other K-Cl cotransporters, to maintain chloride homeostasis in neurons. Alternative splicing results in two transcript variants encoding different isoforms. [provided by RefSeq, Sep 2008]
Protein Families:	Transmembrane

Product images:



Coomassie blue staining of purified SLC12A5 protein (Cat# [TP323680]). The protein was produced from HEK293T cells transfected with SLC12A5 cDNA clone (Cat# [RC223680]) using MegaTran 2.0 (Cat# [TT210002]).