

Product datasheet for **TP323676M**

PLEKHO2 (NM_025201) Human Recombinant Protein

Product data:

Product Type:	Recombinant Proteins
Description:	Recombinant protein of human pleckstrin homology domain containing, family O member 2 (PLEKHO2), 100 µg
Species:	Human
Expression Host:	HEK293T
Expression cDNA Clone or AA Sequence:	>RC223676 representing NM_025201 Red =Cloning site Green =Tags(s)

MEEEGVKEAGEKPRGAQMVDKAGWIKKSSGGLLGFWKDRYLLLCQAQLLVYENEDDQKCVETVELGSYEK
CQDLRALLKRKHRFILLRSPGNKVS DIKFQAPTGEEKESWIKALNEGINRGKNKAFDEVKVDKSCALEHV
TRDRVRRGGQRRRPPTRVHLKEVASAASDGLLRDLDPVDSGPPVFAPSNHVSEAQPRETPRPLMPPTKPF
LAPETTSPGDRVETPVGERAPTPVSASSEVSPESQEDSETPAEEDSGSEQPPNSVLPDKLKVSWENPSPQ
EAPAAESAEPSQAPCSETSEAAPREGGKPPTPPPILSEKLKASMGEMQASGPPAPGTVQVSVNGMDDSP
EPAKPSQAEGTPGTPPKDATTSTALPPWDLPPQFHPRCSSLDLLGEGPRHPLQPRERLYRAQLEVKVAS
EQTEKLLNKVLGSEPAPVSAETLLSQAVEQLRQATQVLQEMRDLGELSQEAPGLREKRKELVTLYRRSAP

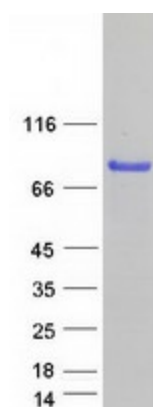
TRTRPLEQKLISEEDLAANDILDYKDDDDKV

Tag:	C-Myc/DDK
Predicted MW:	53.2 kDa
Concentration:	>0.05 µg/µL as determined by microplate BCA method
Purity:	> 80% as determined by SDS-PAGE and Coomassie blue staining
Buffer:	25 mM Tris-HCl, 100 mM glycine, pH 7.3, 10% glycerol
Preparation:	Recombinant protein was captured through anti-DDK affinity column followed by conventional chromatography steps.
Note:	For testing in cell culture applications, please filter before use. Note that you may experience some loss of protein during the filtration process.
Storage:	Store at -80°C.
Stability:	Stable for 12 months from the date of receipt of the product under proper storage and handling conditions. Avoid repeated freeze-thaw cycles.



[View online >](#)

RefSeq:	<u>NP_079477</u>
Locus ID:	80301
UniProt ID:	<u>Q8TD55</u>
RefSeq Size:	3675
Cytogenetics:	15q22.31
RefSeq ORF:	1470
Synonyms:	PLEKHQ1; PP1628; pp9099
Protein Families:	Druggable Genome
Protein Pathways:	Cytokine-cytokine receptor interaction

Product images:

Coomassie blue staining of purified PLEKHO2 protein (Cat# [TP323676]). The protein was produced from HEK293T cells transfected with PLEKHO2 cDNA clone (Cat# [RC223676]) using MegaTran 2.0 (Cat# [TT210002]).