

## Product datasheet for **TP323658L**

### Deoxyribonuclease I like 1 (DNASE1L1) (NM\_001009934) Human Recombinant Protein

#### Product data:

Product Type:	Recombinant Proteins
Description:	Recombinant protein of human deoxyribonuclease I-like 1 (DNASE1L1), transcript variant 4, 1 mg
Species:	Human
Expression Host:	HEK293T
Expression cDNA Clone or AA Sequence:	>RC223658 protein sequence <b>Red</b> =Cloning site <b>Green</b> =Tags(s)

MHYPTALLFLILANGAQAFRICAFNAQRLTLAKVAREQVMDTLVRILARCDIMVLQEVDSSGSAIPLLL  
RELNRFDGSGPYSTLSSPQLGRSTYMETYVYFYRSHKTQVLSSYVYNDEDDVFAREPFVAQFSLPSNVLP  
SLVLVPLHTTPKAVEKELNALYDVFLEVSQHWQSKDVILLGDFNADCASLTKKRLDKLELRTEPGFHWVI  
ADGEDTTVRASTHCTYDRVVLHGRCRSLHTAAAFDFPTSFQLTEEEALNISDHYPVEVELKLSQAHSV  
QPLSLTVLLLLLSPQLCPAA

**TRTRPLEQKLISEEDLAANDILDYKDDDDKV**

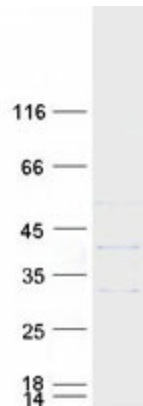
Tag:	C-Myc/DDK
Predicted MW:	31.9 kDa
Concentration:	>0.05 µg/µL as determined by microplate BCA method
Purity:	> 80% as determined by SDS-PAGE and Coomassie blue staining
Buffer:	25 mM Tris-HCl, 100 mM glycine, pH 7.3, 10% glycerol
Preparation:	Recombinant protein was captured through anti-DDK affinity column followed by conventional chromatography steps.
Note:	For testing in cell culture applications, please filter before use. Note that you may experience some loss of protein during the filtration process.
Storage:	Store at -80°C.
Stability:	Stable for 12 months from the date of receipt of the product under proper storage and handling conditions. Avoid repeated freeze-thaw cycles.
RefSeq:	<a href="#">NP_001009934</a>
Locus ID:	1774



[View online »](#)

UniProt ID:	<a href="#">P49184</a>
RefSeq Size:	2665
Cytogenetics:	Xq28
RefSeq ORF:	906
Synonyms:	DNAS1L1; DNASEX; DNL1L; G4.8; XIB
Summary:	This gene encodes a deoxyribonuclease protein that shows high sequence similarity to DNase I. The encoded protein is localized to the endoplasmic reticulum and modified by N-linked glycosylation. Alternate transcriptional splice variants encoding the same protein have been observed. [provided by RefSeq, Jan 2015]

### Product images:



Coomassie blue staining of purified DNASE1L1 protein (Cat# [TP323658]). The protein was produced from HEK293T cells transfected with DNASE1L1 cDNA clone (Cat# [RC223658]) using MegaTran 2.0 (Cat# [TT210002]).