

Product datasheet for TP323643M

Dystrophia myotonica protein kinase (DMPK) (NM_001081562) Human Recombinant Protein

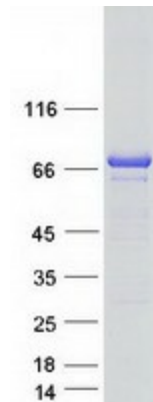
Product data:

Product Type:	Recombinant Proteins
Description:	Recombinant protein of human dystrophia myotonica-protein kinase (DMPK), transcript variant 4, 100 µg
Species:	Human
Expression Host:	HEK293T
Expression cDNA Clone or AA Sequence:	>RC223643 representing NM_001081562 Red=Cloning site Green=Tags(s)
	MSAEVRLRRLQQLVLDPGFLGLEPLDLLLVHQLGASELAQDKYVADFLQWAEPIVWRLKEVRLQRDD FEILKVIGRGAFSEVAVVKMKQTGQVYAMKIMNKWDMMLKRGEVSCFREERDVLVNGDRRWITQLHFAFQD ENLYLVMEYYVGGDLLTLLSKFGERIPAEMARFYLAEIVMAIDSVHRLGYVHRDIKPDNILLDRCGHIR LADFGSCLKLRADGTVRSLVAVGTPDYLSPEILQAVGGPGTGSYGPECDWWALGVFAYEMFYGQTPFYA DSTAETYGKIVHYKEHLSLPLVDEGVPEEARDFIQRLCPPETRLGRGGAGDFRTHPFFFGLDWDGLRDS VPPFTPDEFEGATDTCNFDLVEDGLTAMETLSDIREGAPLGVHLPFVGYSYSCMALRDSEVPGPTPMELEA EQLLEPHVQAPSLEPSVSPQDETAEVAVPAAPAAEAEAEVTLRELQEALIEEVLTRQSLSREMEAIRTD NQNFASQLREAEARNRDLEAHVRQLQERMELQAEGATAVTGVPSPRATDPPSHMAPRPWLWASARWWGQ APCTAATCCSLPGSLGLAYRRRFPCCSPLFCLVPPPWAALGWWPTPANSPOSGAAQEPALPEP TRTRPLEQKLISEEDLAANDILDYKDDDDKV
Tag:	C-Myc/DDK
Predicted MW:	69.4 kDa
Concentration:	>0.05 µg/µL as determined by microplate BCA method
Purity:	> 80% as determined by SDS-PAGE and Coomassie blue staining
Buffer:	25 mM Tris-HCl, 100 mM glycine, pH 7.3, 10% glycerol
Preparation:	Recombinant protein was captured through anti-DDK affinity column followed by conventional chromatography steps.
Note:	For testing in cell culture applications, please filter before use. Note that you may experience some loss of protein during the filtration process.
Storage:	Store at -80°C.



[View online »](#)

Stability:	Stable for 12 months from the date of receipt of the product under proper storage and handling conditions. Avoid repeated freeze-thaw cycles.
RefSeq:	NP_001075031
Locus ID:	1760
UniProt ID:	Q09013 , E5KR05
RefSeq Size:	2873
Cytogenetics:	19q13.32
RefSeq ORF:	1875
Synonyms:	DM; DM1; DM1PK; DMK; MDPK; MT-PK
Summary:	The protein encoded by this gene is a serine-threonine kinase that is closely related to other kinases that interact with members of the Rho family of small GTPases. Substrates for this enzyme include myogenin, the beta-subunit of the L-type calcium channels, and phospholemman. The 3' untranslated region of this gene contains 5-38 copies of a CTG trinucleotide repeat. Expansion of this unstable motif to 50-5,000 copies causes myotonic dystrophy type I, which increases in severity with increasing repeat element copy number. Repeat expansion is associated with condensation of local chromatin structure that disrupts the expression of genes in this region. Several alternatively spliced transcript variants of this gene have been described, but the full-length nature of some of these variants has not been determined. [provided by RefSeq, Jul 2016]
Protein Families:	Druggable Genome, Protein Kinase

Product images:

Coomassie blue staining of purified DMPK protein (Cat# [TP323643]). The protein was produced from HEK293T cells transfected with DMPK cDNA clone (Cat# [RC223643]) using MegaTran 2.0 (Cat# [TT210002]).