

Product datasheet for TP323580

RASGRF2 (NM_006909) Human Recombinant Protein

Product data:

Product Type:	Recombinant Proteins
Description:	Recombinant protein of human Ras protein-specific guanine nucleotide-releasing factor 2 (RASGRF2), 20 µg
Species:	Human
Expression Host:	HEK293T
Expression cDNA Clone or AA Sequence:	>RC223580 representing NM_006909 Red=Cloning site Green=Tags(s)

MQKSVRYNEGHALYLAFLARKEGTRKGFSLKKTAEASRWHEKWFALYQNVLFYFEGEQSCRPAAGMYLLEG
CSCERTPAPPRAGAGQGGVRDALDKQYYFTVLFHGHEGQKPLELRCEEEQDGKEWMEAIHQASYADILIER
EVLQKQYIHLVQIVETEKIAANQLRHQLEDQDTEIERLKSEIINALNKTKERMPYQSNQEDEDPDIIKKIK
KVQSFMRGWLCCRKWKIVQDYICSPHAESMRKRQIVFTMVEAESEYVHQLYLIVNGFLRPLRMAASSK
KPPISHDDVSSIFLNSETIMFLHEIFHQGLKARIANWPTLILADLFDILLPMLNIYQEFVRNHQYSLQVL
ANCKQNRDFDKLLKQYANPACEGRMLETLTYPMFQIPRYIITHELLAHTPHEHVERKSLEFAKSKLE
ELSRVMHDEVSDTENIRKNLAIERMIVEGCDILLDTSQTFIRQGSIIQVPSVERGKLSKVRGLSLSLKE
GERQCFLFTKHFICTRSSGGKLHLLKTGGVLSLIDCTLIEEPDASDDDDSKGSGQVFGHLDFKIWEPPD
AAAFVTVLLAPSRQEKAAWMSDISQCVDNIRCNGLMTIVFEENSKVTPHMIKSDARLHKDDTDICFSKT
LNSCKVPQIRYASVERLLERLTDLRFLSIDFLNFTLHTYRIFTTAAVVLGKLSDIYKRPFTSIPVRSLEL
FFATSQNNRGEHLVDGKSPRLCRKFSSPPPLAVSRTSSPVRARKLSLTSPNSKIGALDLTSSSPTTTT
QSPAASPPPHTGQIPLDLSRGLSSPEQSPGTVEENVNDNPRVDLCNKLKRSIQKAVLESAPADRAGVESP
AADTTELSPCRSPSTPRHLRYRQPGGQTADNAHCSVSPASAFAIATAAAGHGSPPGFNNTERTCDKEFII
RRATATNRVLNVLRHVWSKHAQDFELNNEKMNVLNLLVEVLRDPDLLPQERKAAANILRALSQDDQDDIH
LKLEDIIQMTDCMKAECFESLSAMELAEQITLLDHVIFRSIPYEEFLGQGWMLDKNERTPYIMKTSQHF
NDMSNLVASQIMNYADVSSRANAIEKWWAVADICRCLHNYNGVLEITSALNRSIAIYRLKKTWAKVSKQTK
ALMDKLQKTVSSEGRFKNLRETLKNCNPPAVPYLGMYLTDLAFIEEGTPNFTEEGLVNFSKMRMISHIIR
EIRQFQQTYSRIDHQPQVAQYLLDKDLIIDEEDTLYELSLKIEPRLPA

TRRLEQKLISEEDLAANDILDYKDDDDKV

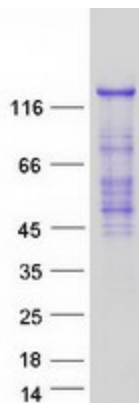
Tag:	C-Myc/DDK
Predicted MW:	140.6 kDa
Concentration:	>0.05 µg/µL as determined by microplate BCA method



[View online »](#)

Purity:	> 80% as determined by SDS-PAGE and Coomassie blue staining
Buffer:	25 mM Tris-HCl, 100 mM glycine, pH 7.3, 10% glycerol
Preparation:	Recombinant protein was captured through anti-DDK affinity column followed by conventional chromatography steps.
Note:	For testing in cell culture applications, please filter before use. Note that you may experience some loss of protein during the filtration process.
Storage:	Store at -80°C.
Stability:	Stable for 12 months from the date of receipt of the product under proper storage and handling conditions. Avoid repeated freeze-thaw cycles.
RefSeq:	NP_008840
Locus ID:	5924
UniProt ID:	O14827 , A0A2X0SFL3 , Q68DX5
RefSeq Size:	4078
Cytogenetics:	5q14.1
RefSeq ORF:	3711
Synonyms:	GRF2; RAS-GRF2
Summary:	RAS GTPases cycle between an inactive GDP-bound state and an active GTP-bound state. This gene encodes a calcium-regulated nucleotide exchange factor activating both RAS and RAS-related protein, RAC1, through the exchange of bound GDP for GTP, thereby, coordinating the signaling of distinct mitogen-activated protein kinase pathways. [provided by RefSeq, Oct 2011]
Protein Pathways:	MAPK signaling pathway

Product images:



Coomassie blue staining of purified RASGRF2 protein (Cat# TP323580). The protein was produced from HEK293T cells transfected with RASGRF2 cDNA clone (Cat# [RC223580]) using MegaTran 2.0 (Cat# [TT210002]).