

## Product datasheet for **TP323579**

### RSU1 (NM\_152724) Human Recombinant Protein

#### Product data:

Product Type:	Recombinant Proteins
Description:	Recombinant protein of human Ras suppressor protein 1 (RSU1), transcript variant 2, 20 µg
Species:	Human
Expression Host:	HEK293T
Expression cDNA Clone or AA Sequence:	>RC223579 protein sequence <b>Red</b> =Cloning site <b>Green</b> =Tags(s)
	 MSKSLKKLVEESREKNQPEVDMSDRGISNMLDVNGLFTLSHITQLVLSHNKLTMVPPNIAELKNLEVLNFFNNQIEELPTQISSLQKLKHLNLMNRLNLTLPFGSLPALEVLDTYNNLSENSLPGNFFYLTLRALY LSDNDFEILPPDIGKLTQILSLRDNDLISLPKEIGELTQLKELHIQGNRLTVLPPELGNLDTGQKQV FKAENNPWVTPIADQFQLGVSHVFEYIRSEYKYLYGRHMQANPEPPKKNNDKSKKISRKPLAAKNR  <b>TRTRPLEQKLISEEDLAANDILDYKDDDDKV</b>
Tag:	C-Myc/DDK
Predicted MW:	25.4 kDa
Concentration:	>0.05 µg/µL as determined by microplate BCA method
Purity:	> 80% as determined by SDS-PAGE and Coomassie blue staining
Buffer:	25 mM Tris-HCl, 100 mM glycine, pH 7.3, 10% glycerol
Preparation:	Recombinant protein was captured through anti-DDK affinity column followed by conventional chromatography steps.
Note:	For testing in cell culture applications, please filter before use. Note that you may experience some loss of protein during the filtration process.
Storage:	Store at -80°C.
Stability:	Stable for 12 months from the date of receipt of the product under proper storage and handling conditions. Avoid repeated freeze-thaw cycles.
RefSeq:	<a href="#">NP_689937</a>
Locus ID:	6251
UniProt ID:	<a href="#">Q15404</a>



[View online »](#)

RefSeq Size: 3657

Cytogenetics: 10p13

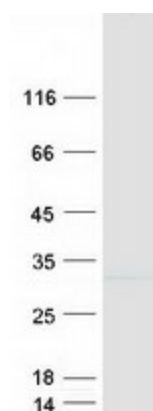
RefSeq ORF: 834

Synonyms: RSP-1

**Summary:** This gene encodes a protein that is involved in the Ras signal transduction pathway, growth inhibition, and nerve-growth factor induced differentiation processes, as determined in mouse and human cell line studies. In mouse, the encoded protein was initially isolated based on its ability to inhibit v-Ras transformation. Multiple alternatively spliced transcript variants for this gene have been reported; one of these variants was found only in glioma tumors. [provided by RefSeq, Jul 2008]

**Protein Families:** Druggable Genome

### Product images:



Coomassie blue staining of purified RSU1 protein (Cat# TP323579). The protein was produced from HEK293T cells transfected with RSU1 cDNA clone (Cat# [RC223579]) using MegaTran 2.0 (Cat# [TT210002]).