

## Product datasheet for **TP323504M**

### Methyltransferase like 6 (METTL6) (NM\_152396) Human Recombinant Protein

#### Product data:

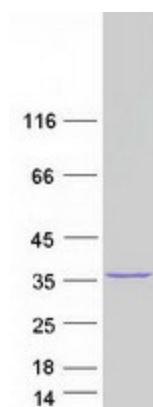
Product Type:	Recombinant Proteins
Description:	Recombinant protein of human methyltransferase like 6 (METTL6), 100 µg
Species:	Human
Expression Host:	HEK293T
Expression cDNA Clone or AA Sequence:	>RC223504 representing NM_152396 <b>Red</b> =Cloning site <b>Green</b> =Tags(s)
	 MASLQRKGLQARILTSEEEKLRDQTLVSDFKQQKLEQEAQKNWDLFYKRNSTNFFKDRHWTTREFEEL RSCREFEDQKLTMLEAGCGVGNCLFPLLEEDPNIFAYACDFSPRAIEYVKQNPLYDTERCKVFQCDLTKD DLLDHVPPESVDVWMLIFVLSAVHPDKMHLVLQNIYKVLKPGKSVLFRDYGLYDHAMLRFKASSKLGENT YVRQDGTRSYFFTDFFLAQLFMDTGYEEVVNEYVFRETVNKKEGLCVPRVFLQSKFLKPPKNPSPVVLGL DPKS  <b>TRTRPLEQKLISEEDLAANDILDYKDDDDKV</b>
Tag:	C-Myc/DDK
Predicted MW:	33.1 kDa
Concentration:	>0.05 µg/µL as determined by microplate BCA method
Purity:	> 80% as determined by SDS-PAGE and Coomassie blue staining
Buffer:	25 mM Tris-HCl, 100 mM glycine, pH 7.3, 10% glycerol
Preparation:	Recombinant protein was captured through anti-DDK affinity column followed by conventional chromatography steps.
Note:	For testing in cell culture applications, please filter before use. Note that you may experience some loss of protein during the filtration process.
Storage:	Store at -80°C.
Stability:	Stable for 12 months from the date of receipt of the product under proper storage and handling conditions. Avoid repeated freeze-thaw cycles.
RefSeq:	<u><a href="#">NP_689609</a></u>
Locus ID:	131965



[View online »](#)

UniProt ID:	<a href="#">Q8TCB7</a>
RefSeq Size:	2499
Cytogenetics:	3p25.1
RefSeq ORF:	852
Summary:	Probable methyltransferase.[UniProtKB/Swiss-Prot Function]
Protein Families:	Druggable Genome
Protein Pathways:	Androgen and estrogen metabolism, Histidine metabolism, Selenoamino acid metabolism, Tyrosine metabolism

### Product images:



Coomassie blue staining of purified METTL6 protein (Cat# [TP323504]). The protein was produced from HEK293T cells transfected with METTL6 cDNA clone (Cat# [RC223504]) using MegaTran 2.0 (Cat# [TT210002]).