

## Product datasheet for **TP323504L**

### Methyltransferase like 6 (METTL6) (NM\_152396) Human Recombinant Protein

#### Product data:

**Product Type:** Recombinant Proteins

**Description:** Recombinant protein of human methyltransferase like 6 (METTL6), 1 mg

**Species:** Human

**Expression Host:** HEK293T

**Expression cDNA Clone or AA Sequence:** >RC223504 representing NM\_152396  
**Red**=Cloning site **Green**=Tags(s)

MASLQRKGLQARILTSEEEKLRDQTLVSDFKQKLEQEAQKNWDLFYKRNSTNFFKDRHWTTREFEEL  
RSCREFEDQKLTMLEAGCGVGNCLFPLLEEDPNIFAYACDFSPRAIEYVKQNPLYDTERCKVFQCDLTKD  
DLLDHVPPESVDVWMLIFVLSAVHPDKMHLVLQNIYKVLKPGKSVLFRDYGLYDHAMLRFKASSKLGENT  
YVRQDGTRSYFFTDFFLAQLFMDTGYEEVVNEYVFRETVNKKEGLCVPRVFLQSKFLKPPKNPSPVVLGL  
DPKS

**TR**TRPLEQKLISEEDLAANDILDYKDDDDKV

**Tag:** C-Myc/DDK

**Predicted MW:** 33.1 kDa

**Concentration:** >0.05 µg/µL as determined by microplate BCA method

**Purity:** > 80% as determined by SDS-PAGE and Coomassie blue staining

**Buffer:** 25 mM Tris-HCl, 100 mM glycine, pH 7.3, 10% glycerol

**Preparation:** Recombinant protein was captured through anti-DDK affinity column followed by conventional chromatography steps.

**Note:** For testing in cell culture applications, please filter before use. Note that you may experience some loss of protein during the filtration process.

**Storage:** Store at -80°C.

**Stability:** Stable for 12 months from the date of receipt of the product under proper storage and handling conditions. Avoid repeated freeze-thaw cycles.

**RefSeq:** [NP\\_689609](#)

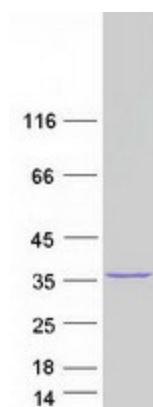
**Locus ID:** 131965



[View online »](#)

UniProt ID:	<a href="#">Q8TCB7</a>
RefSeq Size:	2499
Cytogenetics:	3p25.1
RefSeq ORF:	852
Summary:	Probable methyltransferase.[UniProtKB/Swiss-Prot Function]
Protein Families:	Druggable Genome
Protein Pathways:	Androgen and estrogen metabolism, Histidine metabolism, Selenoamino acid metabolism, Tyrosine metabolism

### Product images:



Coomassie blue staining of purified METTL6 protein (Cat# [TP323504]). The protein was produced from HEK293T cells transfected with METTL6 cDNA clone (Cat# [RC223504]) using MegaTran 2.0 (Cat# [TT210002]).