

Product datasheet for **TP323504**

Methyltransferase like 6 (METTL6) (NM_152396) Human Recombinant Protein

Product data:

Product Type: Recombinant Proteins

Description: Recombinant protein of human methyltransferase like 6 (METTL6), 20 µg

Species: Human

Expression Host: HEK293T

Expression cDNA Clone or AA Sequence: >RC223504 representing NM_152396

Red=Cloning site **Green**=Tags(s)

MASLQRKGLQARILTSEEEKLRDQTLVSDFKQKLEQEAQKNWDLFYKRNSTNFFKDRHWTTREFEEL
RSCREFEDQKLTMLEAGCGVGNCLFPLLEEDPNIFAYACDFSPRAIEYVKQNPLYDTERCKVFQCDLTKD
DLLDHVPPESVDVWMLIFVLSAVHPDKMHLVLQNIYKVLKPGKSVLFRDYGLYDHAMLRFKASSKLGENT
YVRQDGTRSYFFTDFFLAQLFMDTGYEEVVNEYVFRETVNKKEGLCVPRVFLQSKFLKPPKNPSPVVLGL
DPKS

TRTRPLEQKLISEEDLAANDILDYKDDDDKV

Tag: C-Myc/DDK

Predicted MW: 33.1 kDa

Concentration: >0.05 µg/µL as determined by microplate BCA method

Purity: > 80% as determined by SDS-PAGE and Coomassie blue staining

Buffer: 25 mM Tris-HCl, 100 mM glycine, pH 7.3, 10% glycerol

Preparation: Recombinant protein was captured through anti-DDK affinity column followed by conventional chromatography steps.

Note: For testing in cell culture applications, please filter before use. Note that you may experience some loss of protein during the filtration process.

Storage: Store at -80°C.

Stability: Stable for 12 months from the date of receipt of the product under proper storage and handling conditions. Avoid repeated freeze-thaw cycles.

RefSeq: [NP_689609](#)

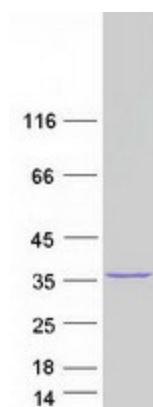
Locus ID: 131965



[View online »](#)

UniProt ID:	Q8TCB7
RefSeq Size:	2499
Cytogenetics:	3p25.1
RefSeq ORF:	852
Summary:	Probable methyltransferase.[UniProtKB/Swiss-Prot Function]
Protein Families:	Druggable Genome
Protein Pathways:	Androgen and estrogen metabolism, Histidine metabolism, Selenoamino acid metabolism, Tyrosine metabolism

Product images:



Coomassie blue staining of purified METTL6 protein (Cat# TP323504). The protein was produced from HEK293T cells transfected with METTL6 cDNA clone (Cat# [RC223504]) using MegaTran 2.0 (Cat# [TT210002]).