

Product datasheet for TP323500L

C1QL3 (NM_001010908) Human Recombinant Protein

Product data:

Product Type:	Recombinant Proteins
Description:	Purified recombinant protein of Homo sapiens complement component 1, q subcomponent-like 3 (C1QL3), 1 mg
Species:	Human
Expression Host:	HEK293T
Expression cDNA Clone or AA Sequence:	>RC223500 representing NM_001010908 Red =Cloning site Green =Tags(s)
	 MVLLLVILIPVLVSSAGTSAHYEMLGTCRMVCDPYGGTKAPSTAATPDRGLMQSLPTFIQGPKEAGRPG KAGPRGPPGEPGPPGPMGPPGEKGEPRQGLPGPPGAPGLNAAGISAATYSTVPKIAFYAGLKRQHEGY EVLKFDDVVTNLGNHYDPTTGKFTCSIPGIYFFTYHVLMRGGDGTSMWADLCKNNQVRASAIQDADQNY DYASNSVVLHLEPGDEVYIKLDGGKAHGGNNNKYSTFSGFIIYAD TRTRPLEQKLISEEDLAANDILDYKDDDDKV
Tag:	C-Myc/DDK
Predicted MW:	26.5 kDa
Concentration:	>0.05 µg/µL as determined by microplate BCA method
Purity:	> 80% as determined by SDS-PAGE and Coomassie blue staining
Buffer:	25 mM Tris-HCl, 100 mM glycine, pH 7.3, 10% glycerol
Preparation:	Recombinant protein was captured through anti-DDK affinity column followed by conventional chromatography steps.
Note:	For testing in cell culture applications, please filter before use. Note that you may experience some loss of protein during the filtration process.
Storage:	Store at -80°C.
Stability:	Stable for 12 months from the date of receipt of the product under proper storage and handling conditions. Avoid repeated freeze-thaw cycles.
RefSeq:	<u>NP_001010908</u>
Locus ID:	389941



[View online »](#)

UniProt ID: [Q5VWW1](#), [A0A3B0J0F3](#)

RefSeq Size: 2493

Cytogenetics: 10p13

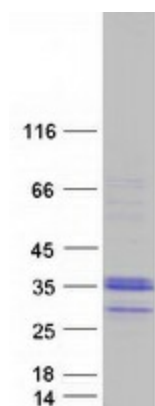
RefSeq ORF: 765

Synonyms: C1ql; C1QTNF13; CTRP13; K100

Summary: May regulate the number of excitatory synapses that are formed on hippocampus neurons. Has no effect on inhibitory synapses (By similarity). Plays a role in glucose homeostasis. Via AMPK signaling pathway, stimulates glucose uptake in adipocytes, myotubes and hepatocytes and enhances insulin-stimulated glucose uptake. In a hepatoma cell line, reduces the expression of gluconeogenic enzymes G6PC and PCK1 and hence decreases de novo glucose production (By similarity).[UniProtKB/Swiss-Prot Function]

Protein Families: Secreted Protein

Product images:



Coomassie blue staining of purified C1QL3 protein (Cat# [TP323500]). The protein was produced from HEK293T cells transfected with C1QL3 cDNA clone (Cat# [RC223500]) using MegaTran 2.0 (Cat# [TT210002]).