

## Product datasheet for TP323499M

### CHD1L (NM\_004284) Human Recombinant Protein

#### Product data:

Product Type:	Recombinant Proteins
Description:	Recombinant protein of human chromodomain helicase DNA binding protein 1-like (CHD1L), 100 µg
Species:	Human
Expression Host:	HEK293T
Expression cDNA Clone or AA Sequence:	>RC223499 representing NM_004284 <b>Red</b> =Cloning site <b>Green</b> =Tags(s)

MERAGATSRGGQAPGFLLRLHTEGRAEAARVQEQDLRQWGLTGIHLRSYQLEGVNWLAQRFHCQNGCILG  
DEMGLGKTCQTIALFIYLAGRLNDEGPFLLCPLSVLSNWKEEMQRFAPGLSCVTYAGDKEERACLQDDL  
KQESRFHVLLTTYEICKDASFLKSPWSVLVDEAHLKNQSSLLHKTSEFSVVFSSLLTGTPIQNSL  
QELYSLLSFVEPDLFSKEEVGDFIQRYQDIEKESASELHKLKLPFLRRVKAEVATELPPKTEVVIYH  
GMSALQKKYYKAILMKDLDAFENETAKKVKLQNILSQLRKCVDHPYLFDGVEPEPFEVGDHLTEASGKLH  
LLDKLLAFLYSGGHRVLLFSQMTQMLDILQDYMDYRGYSYERVDGSRGEERHLAIKNFGQQPIFVFLS  
TRAGGVGMNLTAADTVIFVDSDFNPQNDLQAAARHRIGQNKSVKIVIRLIGRDTVEEIVYKAASKLQLT  
NMIIEGGHFTLGAQKPAADADLQSEILKFGDLKLLASEGSTMDEIDLESILGETKDGQWVSDALPAAEG  
GSRDQEEGKNHMYLFEGKDYSKEPSKEDRKSFEQLVNLQKTLLEKASQEGRSLRNKGSVLIPGLVEGSTK  
RKRVLSPPELEDQRKKRQEAAAKRRRLIEEKKRQKEEAHKKKMAWWESNNYQSFCLPSESEPEDLENG  
EESSAELDYQDPDATSLKYVSGDVTHPQAGAEDALIVHCVDDSGHWGRGGLFTALEKRSAEPRKIYELAG  
KMKDLSLGGVLLFPVDDKESRNKGQDLLALIVAQHRDRSNVLSGIKMAALEEGLKKIFLAAKKKKASVHL  
PRIGHATKGFNWYGTERLIRKHLAARGIPTIYYFPRSKSAVLHAQSSSSSRQLVP

**TRTRPLEQKLISEEDLAANDILDYKDDDDKV**

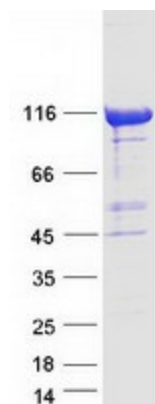
Tag:	C-Myc/DDK
Predicted MW:	100.8 kDa
Concentration:	>0.05 µg/µL as determined by microplate BCA method
Purity:	> 80% as determined by SDS-PAGE and Coomassie blue staining
Buffer:	25 mM Tris-HCl, 100 mM glycine, pH 7.3, 10% glycerol
Preparation:	Recombinant protein was captured through anti-DDK affinity column followed by conventional chromatography steps.



[View online »](#)

<b>Note:</b>	For testing in cell culture applications, please filter before use. Note that you may experience some loss of protein during the filtration process.
<b>Storage:</b>	Store at -80°C.
<b>Stability:</b>	Stable for 12 months from the date of receipt of the product under proper storage and handling conditions. Avoid repeated freeze-thaw cycles.
<b>RefSeq:</b>	<a href="#">NP_004275</a>
<b>Locus ID:</b>	9557
<b>UniProt ID:</b>	<a href="#">Q86WJ1</a>
<b>RefSeq Size:</b>	3023
<b>Cytogenetics:</b>	1q21.1
<b>RefSeq ORF:</b>	2691
<b>Synonyms:</b>	ALC1; CHDL
<b>Summary:</b>	This gene encodes a DNA helicase protein involved in DNA repair. The protein converts ATP to add poly(ADP-ribose) as it regulates chromatin relaxation following DNA damage. Overexpression of this gene has been linked to several types of cancers. [provided by RefSeq, Feb 2017]

### Product images:



Coomassie blue staining of purified CHD1L protein (Cat# [TP323499]). The protein was produced from HEK293T cells transfected with CHD1L cDNA clone (Cat# [RC223499]) using MegaTran 2.0 (Cat# [TT210002]).