

Product datasheet for TP323499

CHD1L (NM_004284) Human Recombinant Protein

Product data:

Product Type:	Recombinant Proteins
Description:	Recombinant protein of human chromodomain helicase DNA binding protein 1-like (CHD1L), 20 µg
Species:	Human
Expression Host:	HEK293T
Expression cDNA Clone or AA Sequence:	>RC223499 representing NM_004284 Red =Cloning site Green =Tags(s)

MERAGATSRGGQAPGFLLRLHTEGRAEAARVQEQDLRQWGLTGIHLRSYQLEGVNWLAQRFHCQNGCILG
DEMGLGKTCQTIALFIYLAGRLNDEGPFLILCPLSVLSNWKEEMQRFAPGLSCVTYAGDKEERACLQDDL
KQESRFHVLLTTYEICKDASFLKSPWSVLVDEAHLRKNQSSLLHKTLSFVSFVLSLLTGTPIQNSL
QELYSLLSFVEPDLFSKEEVGDFIQRYQDIEKESASELHKLKLPFLRRVKAEVATELPPKTEVVIYH
GMSALQKKYYKAILMKDLDAFENETAKKVKLQNILSQLRKCVDPYLFVDFGVEPEPFEVGDHLTEASGKLH
LLDKLLAFLYSGGHRVLLFSQMTQMLDILQDYMDYRGYSYERVDGSRGEERHLAIKNFGQQPIFVFLS
TRAGGVGMNLTAAADTVIFVDSDFNPQNDLQAAARHRIGQNKSVKIVIRLIGRDTVEEIVYKAASKLQLT
NMIIEGGHFTLGAQKPAADADLQSEILKFGDKLLASEGSTMDEIDLESILGETKDGQWVSDALPAAEG
GSRDQEEGKNHMYLFEGKDYSKEPSKEDRKSFEQLVNLQKTLLEKASQEGRSLRNKGSVLIPGLVEGSTK
RKRVLSPPELEDQRKKRQEAAAKRRRLIEEKKRQKEEAHKKKMAWWESNNYQSFCLPSESEPEDLENG
EESSAELDYQDPDATSLKYVSGDVTHPQAGAEDALIVHCVDDSGHWGRGGLFTALEKRSAEPRKIYELAG
KMKDLSLGGVLLFPVDDKESRNKGQDLLALIVAQHRDRSNVLSGIKMAALEEGLKKIFLAAKKKKASVHL
PRIGHATKGFNWYGTERLIRKHLAARGIPTIYYFPRSKSAVLHAQSSSSSRQLVP

TRTRPLEQKLISEEDLAANDILDYKDDDDKV

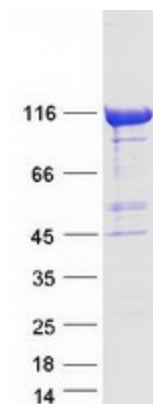
Tag:	C-Myc/DDK
Predicted MW:	100.8 kDa
Concentration:	>0.05 µg/µL as determined by microplate BCA method
Purity:	> 80% as determined by SDS-PAGE and Coomassie blue staining
Buffer:	25 mM Tris-HCl, 100 mM glycine, pH 7.3, 10% glycerol
Preparation:	Recombinant protein was captured through anti-DDK affinity column followed by conventional chromatography steps.



[View online »](#)

Note:	For testing in cell culture applications, please filter before use. Note that you may experience some loss of protein during the filtration process.
Storage:	Store at -80°C.
Stability:	Stable for 12 months from the date of receipt of the product under proper storage and handling conditions. Avoid repeated freeze-thaw cycles.
RefSeq:	NP_004275
Locus ID:	9557
UniProt ID:	Q86WJ1
RefSeq Size:	3023
Cytogenetics:	1q21.1
RefSeq ORF:	2691
Synonyms:	ALC1; CHDL
Summary:	This gene encodes a DNA helicase protein involved in DNA repair. The protein converts ATP to add poly(ADP-ribose) as it regulates chromatin relaxation following DNA damage. Overexpression of this gene has been linked to several types of cancers. [provided by RefSeq, Feb 2017]

Product images:



Coomassie blue staining of purified CHD1L protein (Cat# TP323499). The protein was produced from HEK293T cells transfected with CHD1L cDNA clone (Cat# [RC223499]) using MegaTran 2.0 (Cat# [TT210002]).