

Product datasheet for **TP323455**

GPLD1 (NM_177483) Human Recombinant Protein

Product data:

Product Type:	Recombinant Proteins
Description:	Recombinant protein of human glycosylphosphatidylinositol specific phospholipase D1 (GPLD1), transcript variant 2, 20 µg
Species:	Human
Expression Host:	HEK293T
Expression cDNA Clone or AA Sequence:	>RC223455 representing NM_177483 Red =Cloning site Green =Tags(s) MSAFRLWPGLLIMLGSLCHRGSPCGLSTHVEIGHRALEFLQLHNGRVNYRELLLEHQDAYQAGIVFPDCF YPSICKGGKFHDVSESTHWTPFLNASVHYIRENYPLWEKDTEKLVAFLEFGITSHMAADVSWHSLGLEQG FLRTMGAI DFHGSYSEAH SAGDFGTVYLHLLNFLV TRTRPLEQKLISEEDLAANDILDYKDDDDKV
Tag:	C-Myc/DDK
Predicted MW:	17.3 kDa
Concentration:	>0.05 µg/µL as determined by microplate BCA method
Purity:	> 80% as determined by SDS-PAGE and Coomassie blue staining
Buffer:	25 mM Tris-HCl, 100 mM glycine, pH 7.3, 10% glycerol
Preparation:	Recombinant protein was captured through anti-DDK affinity column followed by conventional chromatography steps.
Note:	For testing in cell culture applications, please filter before use. Note that you may experience some loss of protein during the filtration process.
Storage:	Store at -80°C.
Stability:	Stable for 12 months from the date of receipt of the product under proper storage and handling conditions. Avoid repeated freeze-thaw cycles.
RefSeq:	NP_803436
Locus ID:	2822
UniProt ID:	P80108



[View online »](#)

RefSeq Size: 1096

Cytogenetics: 6p22.3

RefSeq ORF: 528

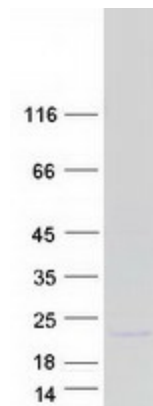
Synonyms: GPIPLD; GPIPLDM; MGC22590; PIGPLD; PIGPLD1

Summary: Many proteins are tethered to the extracellular face of eukaryotic plasma membranes by a glycosylphosphatidylinositol (GPI) anchor. The GPI-anchor is a glycolipid found on many blood cells. The protein encoded by this gene is a GPI degrading enzyme. Glycosylphosphatidylinositol specific phospholipase D1 hydrolyzes the inositol phosphate linkage in proteins anchored by phosphatidylinositol glycans, thereby releasing the attached protein from the plasma membrane. [provided by RefSeq, Jul 2008]

Protein Families: Druggable Genome, Secreted Protein

Protein Pathways: Glycosylphosphatidylinositol(GPI)-anchor biosynthesis

Product images:



Coomassie blue staining of purified GPLD1 protein (Cat# TP323455). The protein was produced from HEK293T cells transfected with GPLD1 cDNA clone (Cat# [RC223455]) using MegaTran 2.0 (Cat# [TT210002]).