

Product datasheet for **TP323431L**

GDPD1 (NM_182569) Human Recombinant Protein

Product data:

Product Type:	Recombinant Proteins
Description:	Recombinant protein of human glycerophosphodiester phosphodiesterase domain containing 1 (GDPD1), 1 mg
Species:	Human
Expression Host:	HEK293T
Expression cDNA Clone or AA Sequence:	>RC223431 representing NM_182569 Red =Cloning site Green =Tags(s) MSSTAAFYLLSTLGGYLVTSFLLKYP TLLHQRKKQRFLSKHISHRGGAGENLENTMAAFQHAVKIGTDT LELDCHITKDEQVVSHDENLKRATGVNVNISDLKYCELPPYLGKLDVSFQACQCEGKDNRIPLLKEVF EAFPNTPINIDIKVNNNVLIKKVSELVKRYNREHLTVWGNANYEIVEKCYKENS DIPILFSLQRVLLILG LFFTGLLPFVPIREQFFEIPMPSIILKLKEPHTMSRSQKFLIWLSDLLMRKALFDHLTARGIQVYIWVL NEEQEYKRAFDL GATGVMTDYPTKLRDFLHNFS A TRTRPLEQKLISEEDLAANDILDYKDDDDKV
Tag:	C-Myc/DDK
Predicted MW:	36 kDa
Concentration:	>0.05 µg/µL as determined by microplate BCA method
Purity:	> 80% as determined by SDS-PAGE and Coomassie blue staining
Buffer:	25 mM Tris-HCl, 100 mM glycine, pH 7.3, 10% glycerol
Preparation:	Recombinant protein was captured through anti-DDK affinity column followed by conventional chromatography steps.
Note:	For testing in cell culture applications, please filter before use. Note that you may experience some loss of protein during the filtration process.
Storage:	Store at -80°C.
Stability:	Stable for 12 months from the date of receipt of the product under proper storage and handling conditions. Avoid repeated freeze-thaw cycles.
RefSeq:	<u>NP_872375</u>
Locus ID:	284161


[View online »](#)

UniProt ID: [Q8N9F7](#)

RefSeq Size: 1822

Cytogenetics: 17q22

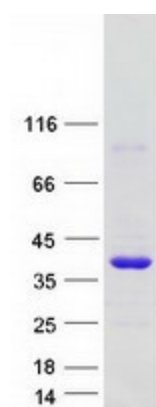
RefSeq ORF: 942

Synonyms: GDE4

Summary: This gene encodes a member of the glycerophosphodiester phosphodiesterase family of enzymes that catalyze the hydrolysis of deacylated glycerophospholipids to glycerol phosphate and alcohol. The encoded protein is localized to the cytoplasm and concentrates near the perinuclear region. Alternative splicing results in multiple transcript variants. [provided by RefSeq, Oct 2009]

Protein Families: Transmembrane

Product images:



Coomassie blue staining of purified GDPD1 protein (Cat# [TP323431]). The protein was produced from HEK293T cells transfected with GDPD1 cDNA clone (Cat# [RC223431]) using MegaTran 2.0 (Cat# [TT210002]).