

## Product datasheet for **TP323400M**

### **PRLH (NM\_015893) Human Recombinant Protein**

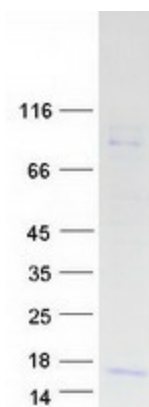
#### **Product data:**

|  |  |
|--|--|
| <b>Product Type:</b>                         | Recombinant Proteins   |
| <b>Description:</b>                          | Recombinant protein of human prolactin releasing hormone (PRLH), 100 µg  |
| <b>Species:</b>                              | Human  |
| <b>Expression Host:</b>                      | HEK293T  |
| <b>Expression cDNA Clone or AA Sequence:</b> | >RC223400 protein sequence<br><b>Red</b> =Cloning site <b>Green</b> =Tags(s)<br><br>MKVLRAWLLCLLMLGLALRGAASRTHRHSMEIRTPDINPAWYASRGIRPVGRFRRRATLGDVPKPGLRP<br>RLTCFPLEGGAMSSQDG<br><br><b>TRTRPLEQKLISEEDLAANDILDYKDDDDKV</b> |
| <b>Tag:</b>                                  | C-Myc/DDK  |
| <b>Predicted MW:</b>                         | 9.5 kDa  |
| <b>Concentration:</b>                        | >0.05 µg/µL as determined by microplate BCA method   |
| <b>Purity:</b>                               | > 80% as determined by SDS-PAGE and Coomassie blue staining  |
| <b>Buffer:</b>                               | 25 mM Tris-HCl, 100 mM glycine, pH 7.3, 10% glycerol   |
| <b>Preparation:</b>                          | Recombinant protein was captured through anti-DDK affinity column followed by conventional chromatography steps.   |
| <b>Note:</b>                                 | For testing in cell culture applications, please filter before use. Note that you may experience some loss of protein during the filtration process.   |
| <b>Storage:</b>                              | Store at -80°C.  |
| <b>Stability:</b>                            | Stable for 12 months from the date of receipt of the product under proper storage and handling conditions. Avoid repeated freeze-thaw cycles.  |
| <b>RefSeq:</b>                               | <a href="#">NP_056977</a>  |
| <b>Locus ID:</b>                             | 51052  |
| <b>UniProt ID:</b>                           | <a href="#">P81277</a> , <a href="#">Q53QV7</a>  |
| <b>RefSeq Size:</b>                          | 264  |
| <b>Cytogenetics:</b>                         | 2q37.3   |



[View online »](#)

|                   |  |
|-------------------|--|
| RefSeq ORF:       | 263  |
| Synonyms:         | PRH; PRRP  |
| Summary:          | Stimulates prolactin (PRL) release and regulates the expression of prolactin through its receptor GPR10. May stimulate lactotrophs directly to secrete PRL.[UniProtKB/Swiss-Prot Function] |
| Protein Families: | Secreted Protein, Transmembrane  |

**Product images:**

Coomassie blue staining of purified PRLH protein (Cat# [TP323400]). The protein was produced from HEK293T cells transfected with PRLH cDNA clone (Cat# [RC223400]) using MegaTran 2.0 (Cat# [TT210002]).