

## Product datasheet for **TP323400**

### **PRLH (NM\_015893) Human Recombinant Protein**

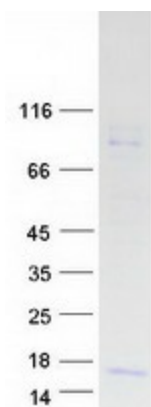
#### **Product data:**

Product Type:	Recombinant Proteins
Description:	Recombinant protein of human prolactin releasing hormone (PRLH), 20 µg
Species:	Human
Expression Host:	HEK293T
Expression cDNA Clone or AA Sequence:	>RC223400 protein sequence <b>Red</b> =Cloning site <b>Green</b> =Tags(s)
	MKVLRAWLLCLLMLGLALRGAASRTHRHSMEIRTPDINPAWYASRGIRPVGRFRRRATLGDVPKPGLRP RLTCFPLEGGAMSSQDG
	<b>TRTRPLEQKLISEEDLAANDILDYKDDDDKV</b>
Tag:	C-Myc/DDK
Predicted MW:	9.5 kDa
Concentration:	>0.05 µg/µL as determined by microplate BCA method
Purity:	> 80% as determined by SDS-PAGE and Coomassie blue staining
Buffer:	25 mM Tris-HCl, 100 mM glycine, pH 7.3, 10% glycerol
Preparation:	Recombinant protein was captured through anti-DDK affinity column followed by conventional chromatography steps.
Note:	For testing in cell culture applications, please filter before use. Note that you may experience some loss of protein during the filtration process.
Storage:	Store at -80°C.
Stability:	Stable for 12 months from the date of receipt of the product under proper storage and handling conditions. Avoid repeated freeze-thaw cycles.
RefSeq:	<a href="#">NP_056977</a>
Locus ID:	51052
UniProt ID:	<a href="#">P81277</a> , <a href="#">Q53QV7</a>
RefSeq Size:	264
Cytogenetics:	2q37.3



[View online »](#)

RefSeq ORF:	263
Synonyms:	PRH; PRRP
Summary:	Stimulates prolactin (PRL) release and regulates the expression of prolactin through its receptor GPR10. May stimulate lactotrophs directly to secrete PRL.[UniProtKB/Swiss-Prot Function]
Protein Families:	Secreted Protein, Transmembrane

**Product images:**

Coomassie blue staining of purified PRLH protein (Cat# TP323400). The protein was produced from HEK293T cells transfected with PRLH cDNA clone (Cat# [RC223400]) using MegaTran 2.0 (Cat# [TT210002]).