

Product datasheet for **TP323396M**

C9orf23 (RPP25L) (NM_148179) Human Recombinant Protein

Product data:

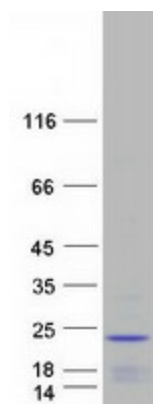
Product Type:	Recombinant Proteins
Description:	Recombinant protein of human chromosome 9 open reading frame 23 (C9orf23), transcript variant 2, 100 µg
Species:	Human
Expression Host:	HEK293T
Expression cDNA Clone or AA Sequence:	>RC223396 protein sequence Red =Cloning site Green =Tags(s)
	MEHYRKAGSVLPAPSPMPQLPPDTLEMRVRDGSKIRNLLGLALGRLEGG SARHWVFSGSGRAAGKAVSC AEIVKRRVPGHLHQLTKRFLQTEDSWVPASPDTGLDPLTVRRHVPVWVLLSRDPLDPNECGYQPPGAPP GLGSMPSSSCGPRSRRRARDTRS
	TRTRPLEQKLISEEDLAANDILDYKDDDDKV
Tag:	C-Myc/DDK
Predicted MW:	17.5 kDa
Concentration:	>0.05 µg/µL as determined by microplate BCA method
Purity:	> 80% as determined by SDS-PAGE and Coomassie blue staining
Buffer:	25 mM Tris-HCl, 100 mM glycine, pH 7.3, 10% glycerol
Preparation:	Recombinant protein was captured through anti-DDK affinity column followed by conventional chromatography steps.
Note:	For testing in cell culture applications, please filter before use. Note that you may experience some loss of protein during the filtration process.
Storage:	Store at -80°C.
Stability:	Stable for 12 months from the date of receipt of the product under proper storage and handling conditions. Avoid repeated freeze-thaw cycles.
RefSeq:	<u>NP_680545</u>
Locus ID:	138716
UniProt ID:	<u>Q8N5L8</u>



[View online »](#)

RefSeq Size:	1119
Cytogenetics:	9p13.3
RefSeq ORF:	489
Synonyms:	bA296L22.5; C9orf23
Summary:	This gene encodes a protein that appears to belong to a family of evolutionarily related proteins (DUF78), that may share one or more domains in common. Members of this family are small archaeobacterial proteins with no known function. Alternative splicing has been observed at this locus and two variants, both encoding the same protein, have been identified. [provided by RefSeq, Jul 2008]

Product images:



Coomassie blue staining of purified RPP25L protein (Cat# [TP323396]). The protein was produced from HEK293T cells transfected with RPP25L cDNA clone (Cat# [RC223396]) using MegaTran 2.0 (Cat# [TT210002]).