

## Product datasheet for **TP323392**

### Placental lactogen (CSH2) (NM\_022645) Human Recombinant Protein

#### Product data:

Product Type:	Recombinant Proteins
Description:	Recombinant protein of human chorionic somatomammotropin hormone 2 (CSH2), transcript variant 3, 20 µg
Species:	Human
Expression Host:	HEK293T
Expression cDNA Clone or AA Sequence:	>RC223392 representing NM_022645 <b>Red</b> =Cloning site <b>Green</b> =Tags(s)
	MAAGSRTSLLLA FALLCLPWLQEAGAVQTVPLSRLFDHAMLQAHRAHQLAIDTYQEFRLEDGSRRTGQIL KQTYSKFDTNSHNHDALLKNYGLLYCFRKDMDKVETFLRMVQCRSVEGSCGF
	<b>TR</b> TRPLEQKLISEEDLAANDILDYKDDDDKV
Tag:	C-Myc/DDK
Predicted MW:	13.7 kDa
Concentration:	>0.05 µg/µL as determined by microplate BCA method
Purity:	> 80% as determined by SDS-PAGE and Coomassie blue staining
Buffer:	25 mM Tris-HCl, 100 mM glycine, pH 7.3, 10% glycerol
Preparation:	Recombinant protein was captured through anti-DDK affinity column followed by conventional chromatography steps.
Note:	For testing in cell culture applications, please filter before use. Note that you may experience some loss of protein during the filtration process.
Storage:	Store at -80°C.
Stability:	Stable for 12 months from the date of receipt of the product under proper storage and handling conditions. Avoid repeated freeze-thaw cycles.
RefSeq:	<a href="#">NP_072171</a>
Locus ID:	1443
UniProt ID:	<a href="#">B1A4H9</a>
RefSeq Size:	598



[View online »](#)

Cytogenetics: 17q23.3

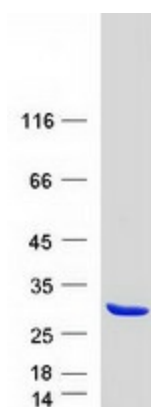
RefSeq ORF: 366

Synonyms: CS-2; CSB; GHB1; hCS-B; PL

**Summary:** The protein encoded by this gene is a member of the somatotropin/prolactin family of hormones and plays an important role in growth control. The gene is located at the growth hormone locus on chromosome 17 along with four other related genes in the same transcriptional orientation; an arrangement which is thought to have evolved by a series of gene duplications. Although the five genes share a remarkably high degree of sequence identity, they are expressed selectively in different tissues. Alternative splicing generates additional isoforms of each of the five growth hormones. This particular family member is expressed mainly in the placenta and utilizes multiple transcription initiation sites. Expression of the identical mature proteins for chorionic somatomammotropin hormones 1 and 2 is upregulated during development, while the ratio of 1 to 2 increases by term. Structural and expression differences provide avenues for developmental regulation and tissue specificity. [provided by RefSeq, Jul 2008]

**Protein Families:** Secreted Protein

### Product images:



Coomassie blue staining of purified CSH2 protein (Cat# TP323392). The protein was produced from HEK293T cells transfected with CSH2 cDNA clone (Cat# [RC223392]) using MegaTran 2.0 (Cat# [TT210002]).