

Product datasheet for **TP323374M**

BCL2L15 (NM_001010922) Human Recombinant Protein

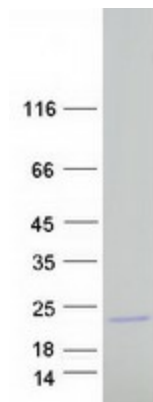
Product data:

Product Type:	Recombinant Proteins
Description:	Recombinant protein of human BCL2-like 15 (BCL2L15), 100 µg
Species:	Human
Expression Host:	HEK293T
Expression cDNA Clone or AA Sequence:	>RC223374 protein sequence Red =Cloning site Green =Tags(s)
	 MKSSQTFEEQTECIVNTLLMDFLSPTLQVASRNLCVDEVDVSGEPCSFVAVIIAGRLRMLGDQFNGELEA SAKNVIAETIKGQTGAILQNTVESLSKTWCAQDSSLAYERAFLAVSVKLLLEYMAHIAPEVVGQVAIPMTG MINGNQAIREFIQGGQGWENLES TRTRPLEQKLISEEDLAANDILDYKDDDDKV
Tag:	C-Myc/DDK
Predicted MW:	17.5 kDa
Concentration:	>0.05 µg/µL as determined by microplate BCA method
Purity:	> 80% as determined by SDS-PAGE and Coomassie blue staining
Buffer:	25 mM Tris-HCl, 100 mM glycine, pH 7.3, 10% glycerol
Preparation:	Recombinant protein was captured through anti-DDK affinity column followed by conventional chromatography steps.
Note:	For testing in cell culture applications, please filter before use. Note that you may experience some loss of protein during the filtration process.
Storage:	Store at -80°C.
Stability:	Stable for 12 months from the date of receipt of the product under proper storage and handling conditions. Avoid repeated freeze-thaw cycles.
RefSeq:	<u>NP_001010922</u>
Locus ID:	440603
UniProt ID:	<u>Q5TBC7</u> , <u>Q53EI7</u>
RefSeq Size:	4986



[View online »](#)

Cytogenetics: 1p13.2
RefSeq ORF: 489
Synonyms: Bfk; C1orf178

Product images:

Coomassie blue staining of purified BCL2L15 protein (Cat# [TP323374]). The protein was produced from HEK293T cells transfected with BCL2L15 cDNA clone (Cat# [RC223374]) using MegaTran 2.0 (Cat# [TT210002]).