

## Product datasheet for **TP323374L**

### **BCL2L15 (NM\_001010922) Human Recombinant Protein**

#### Product data:

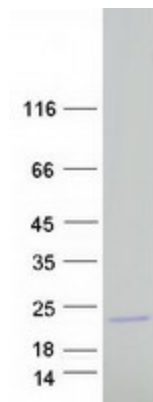
Product Type:	Recombinant Proteins
Description:	Recombinant protein of human BCL2-like 15 (BCL2L15), 1 mg
Species:	Human
Expression Host:	HEK293T
Expression cDNA Clone or AA Sequence:	>RC223374 protein sequence <b>Red</b> =Cloning site <b>Green</b> =Tags(s)
	 MKSSQTFEEQTECIVNTLLMDFLSPTLQVASRNLCVDEVDVSGEPCSFVAVIIAGRLRMLGDQFNGELEA SAKNVIAETIKGQTGAILQNTVESLSKTWCAQDSSLAYERAFLAVSVKLLLEYMAHIAPEVVGQVAIPMTG MINGNQAIREFIQGGWENLES  <b>TRTRPLEQKLISEEDLAANDILDYKDDDDKV</b>
Tag:	C-Myc/DDK
Predicted MW:	17.5 kDa
Concentration:	>0.05 µg/µL as determined by microplate BCA method
Purity:	> 80% as determined by SDS-PAGE and Coomassie blue staining
Buffer:	25 mM Tris-HCl, 100 mM glycine, pH 7.3, 10% glycerol
Preparation:	Recombinant protein was captured through anti-DDK affinity column followed by conventional chromatography steps.
Note:	For testing in cell culture applications, please filter before use. Note that you may experience some loss of protein during the filtration process.
Storage:	Store at -80°C.
Stability:	Stable for 12 months from the date of receipt of the product under proper storage and handling conditions. Avoid repeated freeze-thaw cycles.
RefSeq:	<a href="#">NP_001010922</a>
Locus ID:	440603
UniProt ID:	<a href="#">Q5TBC7</a> , <a href="#">Q53EI7</a>
RefSeq Size:	4986



[View online »](#)

Cytogenetics: 1p13.2  
RefSeq ORF: 489  
Synonyms: Bfk; C1orf178

### Product images:



Coomassie blue staining of purified BCL2L15 protein (Cat# [TP323374]). The protein was produced from HEK293T cells transfected with BCL2L15 cDNA clone (Cat# [RC223374]) using MegaTran 2.0 (Cat# [TT210002]).