

## Product datasheet for **TP323360M**

### TLL1 (NM\_012464) Human Recombinant Protein

#### Product data:

**Product Type:** Recombinant Proteins  
**Description:** Recombinant protein of human tollid-like 1 (TLL1), 100 µg  
**Species:** Human  
**Expression Host:** HEK293T  
**Expression cDNA** >RC223360 representing NM\_012464  
**Clone or AA Sequence:** Red=Cloning site Green=Tags(s)

MGLGTLSPRMLWLVASGIVFYGELWVCAGLDYDYTFDGNEDKTETIDYKDPCKAAVFWGDIALDDEDL  
NIFQIDRTIDLTQNPFGNLGHTTGGLGDHMSKKRGALYQLIDRIRRIGFGLQNNNTVKGKVPPLQFSGQN  
EKNRVPRAATSRTERIWPGGVIPYVIGGNFTGSQRAMFKQAMRHWEKHTCVTFIERSDEESYIVFTYRPC  
GCCSYVGRNGPQAISIGKNCDKFGIVHELGHVIGFWHEHTRPDRDNHVHTIIRENIQPGQEYNFLKME  
PGEVNSLGERYDFDSIMHYARNTFSRGMFLDTILPSRDDNGIRPAIGQRTRLSKGDIAQARKLYRCPACG  
ETLQESNGNLSSPGFPNGYPSYTHCIWRVSVTPGEKIVLNFTTMDLYKSSLCWYDYIEVRDGYWRKSPLL  
GRFCGDKLPEVLTSTDSRMWIEFRSSSNWVGKGAAYEACGGEIRKNEGQIQSPNYPDDYRPMKECVW  
KITVSESYHVGLTFQSFIEHRHDNCAYDYLEVRDGTSENSPLIGRFCGYDKPEDIRSTSNTLWMMKFVSDG  
TVNKAGFAANFFKEEDECAKPDRCGCEQRCLNTLGSYQCACEPGYELGPDRRSCEAACGGLLTKLNGTIT  
TPGWPKEYPPNKNVCVWQVWAPTQYRISVKFEFFELEGNVCKYDYVEIWSGLSSESKLHGKFCGAEVPEV  
ITSQFNNMRIEFKSDNTVSKKGFKAHFFSDKDECSKDNNGGCQHECVNTMGSYMCCQCRNGFVLHDNKHDCK  
EAECEQKIHSPLITSPNWPDKYPSRKECTWEISATPGHRIKLAFFSEFEIEHQECAYDHLEVDGGETE  
KSPILGRLCGNKIPDPLVATGNKMFVRFVSDASVQRKGFQATHSTECGRLKAESKPRDLYSHAQFGDNN  
YPGQVDCEWLLVSEGRSLELSFQTFEVEEEADCGYDYVELFDGLDSTAVGLGRFCGSGPPEEISIGDS  
VLIHFHTDDTINKKGFHIRYKSIRYPDTTHTTK

TRTRPLEQKLISEEDLAANDILDYKDDDDKV

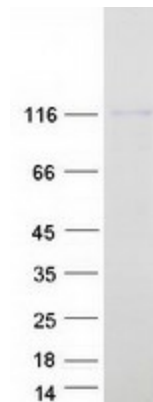
**Tag:** C-Myc/DDK  
**Predicted MW:** 114.5 kDa  
**Concentration:** >0.05 µg/µL as determined by microplate BCA method  
**Purity:** > 80% as determined by SDS-PAGE and Coomassie blue staining  
**Buffer:** 25 mM Tris-HCl, 100 mM glycine, pH 7.3, 10% glycerol



[View online »](#)

<b>Preparation:</b>	Recombinant protein was captured through anti-DDK affinity column followed by conventional chromatography steps.
<b>Note:</b>	For testing in cell culture applications, please filter before use. Note that you may experience some loss of protein during the filtration process.
<b>Storage:</b>	Store at -80°C.
<b>Stability:</b>	Stable for 12 months from the date of receipt of the product under proper storage and handling conditions. Avoid repeated freeze-thaw cycles.
<b>RefSeq:</b>	<a href="#">NP_036596</a>
<b>Locus ID:</b>	7092
<b>UniProt ID:</b>	<a href="#">O43897</a> , <a href="#">B7ZLW3</a>
<b>RefSeq Size:</b>	6654
<b>Cytogenetics:</b>	4q32.3
<b>RefSeq ORF:</b>	3039
<b>Synonyms:</b>	ASD6; TLL
<b>Summary:</b>	This gene encodes an astacin-like, zinc-dependent, metalloprotease that belongs to the peptidase M12A family. This protease processes procollagen C-propeptides, such as chordin, pro-biglycan and pro-lysyl oxidase. Studies in mice suggest that this gene plays multiple roles in the development of mammalian heart, and is essential for the formation of the interventricular septum. Allelic variants of this gene are associated with atrial septal defect type 6. Alternatively spliced transcript variants encoding different isoforms have been found for this gene. [provided by RefSeq, Mar 2011]
<b>Protein Families:</b>	Druggable Genome, Protease, Secreted Protein

### Product images:



Coomassie blue staining of purified TLL1 protein (Cat# [TP323360]). The protein was produced from HEK293T cells transfected with TLL1 cDNA clone (Cat# [RC223360]) using MegaTran 2.0 (Cat# [TT210002]).