

Product datasheet for TP323360L

TLL1 (NM_012464) Human Recombinant Protein

Product data:

Product Type: Recombinant Proteins
Description: Recombinant protein of human tolloid-like 1 (TLL1), 1 mg
Species: Human
Expression Host: HEK293T
Expression cDNA >RC223360 representing NM_012464
Clone or AA Sequence: Red=Cloning site Green=Tags(s)

MGLGTLSPRMLWLVASGIVFYGELWVCAGLDYDYTFDGNEDKTETIDYKDPCKAAVFWGDIALDDEDL
NIFQIDRTIDLTQNPFGNLGHTTGGLGDHMSKRRGALYQLIDRIRRIGFGLQNNNTVKGVPLQFSGQN
EKNRVPRAATSRTERIWPGGVIPYVIGGNFTGSQRAMFKQAMRHWEKHTCVTFIERSDEESYIVFTYRPC
GCCSYVGRNGPQASIGKNCDFGIVVHELGHVIGFWHEHTRPDRDNHVHTIIRENIQPGQEYNFLKME
PGEVNSLGERYDFDSIMHYARNTFSRGMFLDTILPSRDDNGIRPAIGQRTRLSKGDIAQARKLYRCPACG
ETLQESNGNLSSPGFPNGYPSYTHCIWRVSVTPGEKIVLNFTTMDLYKSSLCWYDYIEVRDGYWRKSPLL
GRFCGDKLPEVLTSTDSRMWIEFRSSSNVWGKGAAYVEAICGGEIRKNEGQIQSPNYPDDYRPMKECVW
KITVSESYHVGLTFQSFIEHRHDNCAYDYLEVRDGTSENSPLIGRFCGYDKPEDIRSTSNTLWMKFVSDG
TVNKAGFAANFFKEEDECAKPDRCGCEQRCLNTLGSYQCACEPGYELGPDRRSCEAACGGLLTKLNGTIT
TPGWPKYPPNKNVCVWQVWAPTQYRISVKFEFFFELEGNEVCKYDYVEIWSGLSSESKLHGKFCGAEVPEV
ITSQFNNMRIEFKSDNTVSKKGFKAHFFSDKDECSKDNNGGCQHECVNTMGSYMCCQRNGFVLHDNKHDC
EAECEQKIHSPLITSPNWPDKYPSRKECTWEISATPGHRIKLAFFSEFEIEHQECAYDHLEVDGETE
KSPILGRLCGNKIPDPLVATGNKMFVRFVSDASVQRKGFQATHSTECGRLKAESKPRDLYSHAQFGDNN
YPGQVDCEWLLVSESGRLELSFQTFEVEEEADCGYDYVELFDGLDSTAVGLGRFCGSGPPEEISIGDS
VLIHFHTDDTINKKGFHIRYKSIRYPDTTHTTK

TRTRPLEQKLISEEDLAANDILDYKDDDDKV

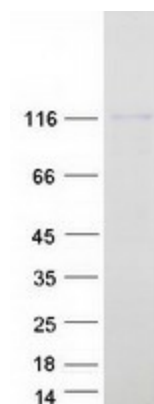
Tag: C-Myc/DDK
Predicted MW: 114.5 kDa
Concentration: >0.05 µg/µL as determined by microplate BCA method
Purity: > 80% as determined by SDS-PAGE and Coomassie blue staining
Buffer: 25 mM Tris-HCl, 100 mM glycine, pH 7.3, 10% glycerol



[View online »](#)

Preparation:	Recombinant protein was captured through anti-DDK affinity column followed by conventional chromatography steps.
Note:	For testing in cell culture applications, please filter before use. Note that you may experience some loss of protein during the filtration process.
Storage:	Store at -80°C.
Stability:	Stable for 12 months from the date of receipt of the product under proper storage and handling conditions. Avoid repeated freeze-thaw cycles.
RefSeq:	NP_036596
Locus ID:	7092
UniProt ID:	O43897 , B7ZLW3
RefSeq Size:	6654
Cytogenetics:	4q32.3
RefSeq ORF:	3039
Synonyms:	ASD6; TLL
Summary:	This gene encodes an astacin-like, zinc-dependent, metalloprotease that belongs to the peptidase M12A family. This protease processes procollagen C-propeptides, such as chordin, pro-biglycan and pro-lysyl oxidase. Studies in mice suggest that this gene plays multiple roles in the development of mammalian heart, and is essential for the formation of the interventricular septum. Allelic variants of this gene are associated with atrial septal defect type 6. Alternatively spliced transcript variants encoding different isoforms have been found for this gene. [provided by RefSeq, Mar 2011]
Protein Families:	Druggable Genome, Protease, Secreted Protein

Product images:



Coomassie blue staining of purified TLL1 protein (Cat# [TP323360]). The protein was produced from HEK293T cells transfected with TLL1 cDNA clone (Cat# [RC223360]) using MegaTran 2.0 (Cat# [TT210002]).