

Product datasheet for TP323337M

INDOL1 (IDO2) (NM_194294) Human Recombinant Protein

Product data:

Product Type:	Recombinant Proteins
Description:	Recombinant protein of human indoleamine 2,3-dioxygenase 2 (IDO2), 100 µg
Species:	Human
Expression Host:	HEK293T
Expression cDNA Clone or AA Sequence:	>RC223337 representing NM_194294 Red=Cloning site Green=Tags(s)

MLHFHYDTSNKIMEPHRPNVKTAVPLSLESYHISEEYGFLLPDSLKELPDHYRPWMEIANKLPQLIDAH
QLQAHVDKMPLLSCQFLKGHREQRLAHLVLSFLTMGYVWQEGEAQPAEVLPRNLALPFVEVSRNLGLPPI
LVHSDLVLTNWTKKDPDGFLIGNLETIISFPGGESLHGFILVTALVEKEAVPGIKALVQATNAILQPNQ
EALLQALQRLRLSIQDITKTLGQMHDYVDPDIFYAGIRIFLSGWKDNPAMPAGLMYEGVSQEPLKYSGGG
AAQSTVLHAFDEFLGIRHSKESGDFLYRMRDYMPPSHKAFIEDIHSAPSLRDYILSSGQDHLLTAYNQCV
QALAE LRSYHITMVT KYLITAAAKAKHGKPNHLP GPPQALKDRGTGGTAVMSFLKSVRDKTLESILHPRG

TRTRPLEQKLISEEDLAANDILDYKDDDDKV

Tag:	C-Myc/DDK
Predicted MW:	46.9 kDa
Concentration:	>0.05 µg/µL as determined by microplate BCA method
Purity:	> 80% as determined by SDS-PAGE and Coomassie blue staining
Buffer:	25 mM Tris-HCl, 100 mM glycine, pH 7.3, 10% glycerol
Preparation:	Recombinant protein was captured through anti-DDK affinity column followed by conventional chromatography steps.
Note:	For testing in cell culture applications, please filter before use. Note that you may experience some loss of protein during the filtration process.
Storage:	Store at -80°C.
Stability:	Stable for 12 months from the date of receipt of the product under proper storage and handling conditions. Avoid repeated freeze-thaw cycles.
RefSeq:	NP_919270
Locus ID:	169355



[View online »](#)

UniProt ID: [Q6ZQW0](#)

RefSeq Size: 2294

Cytogenetics: 8p11.21

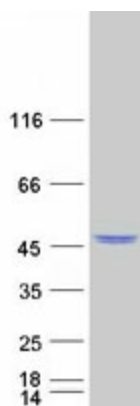
RefSeq ORF: 1260

Synonyms: INDOL1

Summary: Along with the enzymes encoded by the INDO (MIM 147435) and TDO2 (MIM 191070) genes, the enzyme encoded by the INDOL1 gene metabolizes tryptophan in the kynurenine pathway (Ball et al., 2007 [PubMed 17499941]).[supplied by OMIM, Feb 2011]

Protein Pathways: Metabolic pathways, Tryptophan metabolism

Product images:



Coomassie blue staining of purified IDO2 protein (Cat# [TP323337]). The protein was produced from HEK293T cells transfected with IDO2 cDNA clone (Cat# [RC223337]) using MegaTran 2.0 (Cat# [TT210002]).