

## Product datasheet for **TP323337L**

### INDOL1 (IDO2) (NM\_194294) Human Recombinant Protein

#### Product data:

|                                       |   |
|---------------------------------------|---|
| Product Type:                         | Recombinant Proteins  |
| Description:                          | Recombinant protein of human indoleamine 2,3-dioxygenase 2 (IDO2), 1 mg |
| Species:                              | Human   |
| Expression Host:                      | HEK293T   |
| Expression cDNA Clone or AA Sequence: | >RC223337 representing NM_194294<br>Red=Cloning site Green=Tags(s)      |

MLHFHYDTSNKIMEPHRPNVKTAVPLSLESYHISEEYGFLLPDSLKELPDHYRPWMEIANKLPQLIDAH  
QLQAHVDKMPLLSCQFLKGHREQRLAHLVLSFLTMGYVWQEGEAQPAEVLPRNLALPFVEVSRNLGLPPI  
LVHSDLVLTNWTKKDPDGFLIGNLETIISFPGGESLHGFILVTALVEKEAVPGIKALVQATNAILQPNQ  
EALLQALQRLRLSIQDITKTLGQMHDYVDPDIFYAGIRIFLSGWKDNPAMPAGLMYEGVSQEPLKYSGGG  
AAQSTVLHAFDEFGLGIRHSKESGDFLYRMRDYMPPSHKAFIEDIHSAPSLRDYILSSGQDHLLTAYNQCV  
QALAE LRSYHITMVT KYLITAAAKAKHGKPNHLP GPPQALKDRGTGGTAVMSFLKSVRDKTLESILHPRG

TRTRPLEQKLISEEDLAANDILDYKDDDDKV

|                |  |
|----------------|--|
| Tag:           | C-Myc/DDK  |
| Predicted MW:  | 46.9 kDa   |
| Concentration: | >0.05 µg/µL as determined by microplate BCA method   |
| Purity:        | > 80% as determined by SDS-PAGE and Coomassie blue staining  |
| Buffer:        | 25 mM Tris-HCl, 100 mM glycine, pH 7.3, 10% glycerol   |
| Preparation:   | Recombinant protein was captured through anti-DDK affinity column followed by conventional chromatography steps.                                     |
| Note:          | For testing in cell culture applications, please filter before use. Note that you may experience some loss of protein during the filtration process. |
| Storage:       | Store at -80°C.  |
| Stability:     | Stable for 12 months from the date of receipt of the product under proper storage and handling conditions. Avoid repeated freeze-thaw cycles.        |
| RefSeq:        | <a href="#">NP_919270</a>  |
| Locus ID:      | 169355   |



[View online »](#)

UniProt ID: [Q6ZQW0](#)

RefSeq Size: 2294

Cytogenetics: 8p11.21

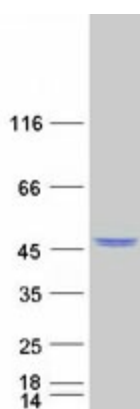
RefSeq ORF: 1260

Synonyms: INDOL1

Summary: Along with the enzymes encoded by the INDO (MIM 147435) and TDO2 (MIM 191070) genes, the enzyme encoded by the INDOL1 gene metabolizes tryptophan in the kynurenine pathway (Ball et al., 2007 [PubMed 17499941]).[supplied by OMIM, Feb 2011]

Protein Pathways: Metabolic pathways, Tryptophan metabolism

### Product images:



Coomassie blue staining of purified IDO2 protein (Cat# [TP323337]). The protein was produced from HEK293T cells transfected with IDO2 cDNA clone (Cat# [RC223337]) using MegaTran 2.0 (Cat# [TT210002]).