

Product datasheet for **TP323329L**

NABC1 (BCAS1) (NM_003657) Human Recombinant Protein

Product data:

Product Type:	Recombinant Proteins
Description:	Recombinant protein of human breast carcinoma amplified sequence 1 (BCAS1), 1 mg
Species:	Human
Expression Host:	HEK293T
Expression cDNA	>RC223329 protein sequence
Clone or AA Sequence:	Red=Cloning site Green=Tags(s)

MGNQMSVPQRVEDQENEPEAETYQDNASALNGVPVWSTHTVQHLEEVDLGISVKTDNVATSSPETTEIS
AVADANGKNLGKEAKPEAPAAKSRRFFLMLSRPVPGRGTDQAADSSLGSVKLDVSSNKAPANKDPSESWTL
PVAAGPGQDTPGHAPAQDKVLSAARDPTLLPPETGGAGGEAPSKPKDSSFFDKFFKLDKGQEKVPGD
SQQEAKRAEHQDKVDEVPGLSGQSDDVPAGKDIDVGKEKEGQELGTADCSVPGDPEGLETAKDDSQAAA
AENNSIMSFFKTLVSPNKAETKKDPEDTGAEKSPPTSADLKSDFKANSFTSQETQGAGKNSKGCNPSGHTQ
SVTTPEPAKEGTEKSGPTSLPLGKLFWKSVKEDSVPTGAEENVVCEPVEIHKSEVESALQTVDLNE
GDAAPEPTEAKLKREESKPRSLMAFLRQMSVKGDDGGITHSEEINGKSSCQTSSTSTETITPPEPEPTG
APQKGKEGSSKDKKSAEMNKQSNKQEAKEPAQCTEQATVDTNSLQNGDKLQKRPEKRQQLGGFFKGL
GPKRMLDAQVQTDVPVSIQPVGKSK

SGPTRRPLEQKLISEEDLAANDILDYKDDDDKV

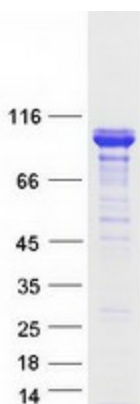
Tag:	C-Myc/DDK
Predicted MW:	61.5 kDa
Concentration:	>0.05 µg/µL as determined by microplate BCA method
Purity:	> 80% as determined by SDS-PAGE and Coomassie blue staining
Buffer:	25 mM Tris-HCl, 100 mM glycine, pH 7.3, 10% glycerol
Preparation:	Recombinant protein was captured through anti-DDK affinity column followed by conventional chromatography steps.
Note:	For testing in cell culture applications, please filter before use. Note that you may experience some loss of protein during the filtration process.
Storage:	Store at -80°C.



[View online »](#)

Stability:	Stable for 12 months from the date of receipt of the product under proper storage and handling conditions. Avoid repeated freeze-thaw cycles.
RefSeq:	NP_003648
Locus ID:	8537
UniProt ID:	O75363
RefSeq Size:	3475
Cytogenetics:	20q13.2
RefSeq ORF:	1752
Synonyms:	AIBC1; NABC1; PMES-2
Summary:	This gene resides in a region at 20q13 which is amplified in a variety of tumor types and associated with more aggressive tumor phenotypes. Among the genes identified from this region, it was found to be highly expressed in three amplified breast cancer cell lines and in one breast tumor without amplification at 20q13.2. However, this gene is not in the common region of maximal amplification and its expression was not detected in the breast cancer cell line MCF7, in which this region is highly amplified. Although not consistently expressed, this gene is a candidate oncogene. [provided by RefSeq, Apr 2016]

Product images:



Coomassie blue staining of purified BCAS1 protein (Cat# [TP323329]). The protein was produced from HEK293T cells transfected with BCAS1 cDNA clone (Cat# [RC223329]) using MegaTran 2.0 (Cat# [TT210002]).