

## Product datasheet for **TP323316M**

### JMJD7-PLA2G4B (NM\_005090) Human Recombinant Protein

#### Product data:

Product Type:	Recombinant Proteins
Description:	Recombinant protein of human JMJD7-PLA2G4B readthrough transcript (JMJD7-PLA2G4B), transcript variant 1, 100 µg
Species:	Human
Expression Host:	HEK293T
Expression cDNA Clone or AA Sequence:	>RC223316 representing NM_005090 <b>Red</b> =Cloning site <b>Green</b> =Tags(s)

MAEAALEAVRSELREFPAAARELCVPLAVPYLDKPPTPLHFYRDWVCPNRPICIRNALQHWPALQKWSLP  
YFRATVVGSTEVSVAVTPDGYADAVRGDRFMMPAERRPLSFVLDVLEGRAQHPGVLYVQKQCSNLPSELP  
QLLPDLESHVPWASEALGKMPDAVNFVLGEEAAVTSLHKDHYENLYCVSAGEKHLFHPSPDRPFIPYEL  
YTPATYQLTEEGTFKVVDEEAMEKAEVSRTECLLTVRVLQAHRLPSKDLVTPSDCYVTLWLPTACSHRLQT  
RTVKNSSSPVWNQSFHFRIHRQLKNVMEKLVFDQDLVTGDDPVLSVLFDAAGTLRAGEFRRESFSLSPQGE  
GRLEVEFRLQSLADRGWLVSNGLVARELSCLHVQLEETGDQKSSEHRVQLVVPGSCEGPQEASVGTGT  
FCFHCPACWEQELSIRLQDAPEEQKAPLSALPSGQVRLVFPTSQEPLMRVELKKEAGLRELAVRLGFG  
PCAEQAFLSRRKQVAAAALRQALQLDGDLEDEIPVVAIMATGGGIRAMTSLYGQLAGLKLGLLDCVS  
YITGASGSTWALANLYEDPEWSQKDLAGPTELLKTQVTKNKGLVAPSQQLQRYRQELAERARLGYPSCT  
NLWALINEALLHDEPHDHKLSQREALSHGQNPLPIYCALNTKGQSLTTFEGEWCEFSPEYVGFPKYGA  
FIPSELFGEFFMGQLMKRLPESRICFLEGIWSNLYAANLQDSLYWASEPSQFWRWRNANLDKEQVP  
LLKIEPPSTAGRIAEFFDILLTWRPLAQATHNFLRGLHFHKDYFQHPHFSTWKATTLDGLPNQLTPSEP  
HLCLLDVGYLINTSCLPLLQPTRDLDLILSLDYNLHGAFQQLQLLGRFCQEQGIPFPPIPSPEEQLPQR  
ECHTFSDPTCPGAPAVLHFPLVSDSFREYSAPGVRRTPEEAAAGEVNLSSSDSPYHYTKVTYSQEDVDKL  
LHLTHYNVCNNQEQLLEALRQAVQRRRQRRPH

**TRTRPLEQKLISEEDLAANDILDYKDDDDKV**

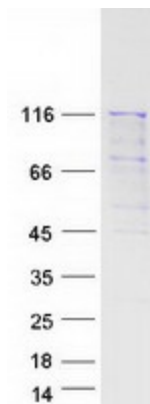
Tag:	C-Myc/DDK
Predicted MW:	113.9 kDa
Concentration:	>0.05 µg/µL as determined by microplate BCA method
Purity:	> 80% as determined by SDS-PAGE and Coomassie blue staining
Buffer:	25 mM Tris-HCl, 100 mM glycine, pH 7.3, 10% glycerol



[View online »](#)

<b>Preparation:</b>	Recombinant protein was captured through anti-DDK affinity column followed by conventional chromatography steps.
<b>Note:</b>	For testing in cell culture applications, please filter before use. Note that you may experience some loss of protein during the filtration process.
<b>Storage:</b>	Store at -80°C.
<b>Stability:</b>	Stable for 12 months from the date of receipt of the product under proper storage and handling conditions. Avoid repeated freeze-thaw cycles.
<b>RefSeq:</b>	<a href="#">NP_005081</a>
<b>Locus ID:</b>	8681
<b>UniProt ID:</b>	<a href="#">POC869</a> , <a href="#">POC869-6</a>
<b>RefSeq Size:</b>	3352
<b>Cytogenetics:</b>	15q15.1
<b>RefSeq ORF:</b>	3036
<b>Synonyms:</b>	cPLA2-beta; HsT16992
<b>Summary:</b>	This locus represents naturally-occurring readthrough transcription between the neighboring jumonji domain containing 7 (JMJD7) and phospholipase A2, group IVB (cytosolic) (PLA2G4B) genes. Readthrough transcripts encode fusion proteins that share amino acid sequence with each individual gene product, including a partial JmjC domain and downstream C2 and phospholipase A2 domains. Alternatively spliced transcript variants have been observed. [provided by RefSeq, Oct 2013]
<b>Protein Pathways:</b>	alpha-Linolenic acid metabolism, Arachidonic acid metabolism, Ether lipid metabolism, Fc epsilon RI signaling pathway, Glycerophospholipid metabolism, GnRH signaling pathway, Linoleic acid metabolism, Long-term depression, MAPK signaling pathway, Metabolic pathways, Vascular smooth muscle contraction, VEGF signaling pathway

### Product images:



Coomassie blue staining of purified JMJD7-PLA2G4B protein (Cat# [TP323316]). The protein was produced from HEK293T cells transfected with JMJD7-PLA2G4B cDNA clone (Cat# [RC223316]) using MegaTran 2.0 (Cat# [TT210002]).