

Product datasheet for TP323316L

JMJD7-PLA2G4B (NM_005090) Human Recombinant Protein

Product data:

| | |
|---------------------------------------|---|
| Product Type: | Recombinant Proteins |
| Description: | Recombinant protein of human JMJD7-PLA2G4B readthrough transcript (JMJD7-PLA2G4B), transcript variant 1, 1 mg |
| Species: | Human |
| Expression Host: | HEK293T |
| Expression cDNA Clone or AA Sequence: | >RC223316 representing NM_005090 Red=Cloning site Green=Tags(s) |

MAEAALEAVRSELREFPAAARELCVPLAVPYLDKPPTPLHFYRDWVCPNRPICIRNALQHWPALQKWSLP
YFRATVVGSTEVSVAVTPDGYADAVRGDRFMMPAERRPLSFVLDVLEGRAQHPGVLYVQKQCSNLPSELP
QLLPDLESHVPWASEALGKMPDAVNFVLGEEAAVTSLHKDHYENLYCVSAGEKHLFHPSPDRPFIPYEL
YTPATYQLTEEGTFKVVDEEAMEKAESVRTCLLTVRVLQAHRLPSKDLVTPSDCYVTLWLPTACSHRLQT
RTVKNSSSPVWNQSFHFRIHRQLKNVMEKVFQDLVTGDDPVLVLFDAAGTLRAGEFRRESFSLSPQGE
GRLEVEFRLQSLADRGEWLVSNGLVARELSCLHVQLEETGDQKSSEHRVQLVPGSCEGPQEASVGTGT
FCFHCPACWEQELSIRLQDAPEEQKAPLSALPSGQVRLVFPSTQEPLMRVELKKEAGLRELAVRLGFG
PCAEQAFLSRRKQVAAAALRQALQLDGDLEDEIPVVAIMATGGGIRAMTSLYGQLAGLKLGLLDCVS
YITGASGSTWALANLYEDPEWSQKDLAGPTELLKTQVTKNKGLVAPSQQLQRYRQELAERARLGYPSCT
NLWALINEALLHDEPHDHKLSQREALSHGQNPLPIYCALNTKGQSLTTFEGEWCEFSPEYVGFPKYGA
FIPSELFGSEFFMGQLMKRLPESRICFLEGIWSNLYAANLQDSLYWASEPSQFWRWRNQNANLDEKQVP
LLKIEPPSTAGRIAEFFDILLTWRPLAQATHNFLRGLHFHKDYFQHPHFSTWKATTLDGLPNQLTPSEP
HLCLLDVGYLINTSCLPLLQPTRDLDLILSLDYNLHGAFQQLQLLGRFCQEQGIPFPPISPSPEEQLPQR
ECHTFSDPTCPGAPAVLHFPLVSDSFREYSAPGVRRTPEEAAAGEVNLSSSDSPYHYTKVTYSQEDVDKL
LHLTHYNVCNNQEQLLEALRQAVQRRRQRRPH

TRTRPLEQKLISEEDLAANDILDYKDDDDKV

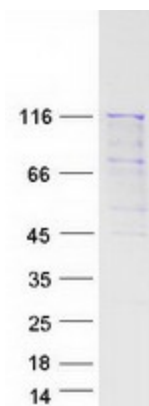
| | |
|----------------|---|
| Tag: | C-Myc/DDK |
| Predicted MW: | 113.9 kDa |
| Concentration: | >0.05 µg/µL as determined by microplate BCA method |
| Purity: | > 80% as determined by SDS-PAGE and Coomassie blue staining |
| Buffer: | 25 mM Tris-HCl, 100 mM glycine, pH 7.3, 10% glycerol |



[View online »](#)

| | |
|--------------------------|--|
| Preparation: | Recombinant protein was captured through anti-DDK affinity column followed by conventional chromatography steps. |
| Note: | For testing in cell culture applications, please filter before use. Note that you may experience some loss of protein during the filtration process. |
| Storage: | Store at -80°C. |
| Stability: | Stable for 12 months from the date of receipt of the product under proper storage and handling conditions. Avoid repeated freeze-thaw cycles. |
| RefSeq: | NP_005081 |
| Locus ID: | 8681 |
| UniProt ID: | POC869 , POC869-6 |
| RefSeq Size: | 3352 |
| Cytogenetics: | 15q15.1 |
| RefSeq ORF: | 3036 |
| Synonyms: | cPLA2-beta; HsT16992 |
| Summary: | This locus represents naturally-occurring readthrough transcription between the neighboring jumonji domain containing 7 (JMJD7) and phospholipase A2, group IVB (cytosolic) (PLA2G4B) genes. Readthrough transcripts encode fusion proteins that share amino acid sequence with each individual gene product, including a partial JmjC domain and downstream C2 and phospholipase A2 domains. Alternatively spliced transcript variants have been observed. [provided by RefSeq, Oct 2013] |
| Protein Pathways: | alpha-Linolenic acid metabolism, Arachidonic acid metabolism, Ether lipid metabolism, Fc epsilon RI signaling pathway, Glycerophospholipid metabolism, GnRH signaling pathway, Linoleic acid metabolism, Long-term depression, MAPK signaling pathway, Metabolic pathways, Vascular smooth muscle contraction, VEGF signaling pathway |

Product images:



Coomassie blue staining of purified JMJD7-PLA2G4B protein (Cat# [TP323316]). The protein was produced from HEK293T cells transfected with JMJD7-PLA2G4B cDNA clone (Cat# [RC223316]) using MegaTran 2.0 (Cat# [TT210002]).