

Product datasheet for **TP323315L**

C11orf17 (AKIP1) (NM_020642) Human Recombinant Protein

Product data:

Product Type:	Recombinant Proteins
Description:	Recombinant protein of human chromosome 11 open reading frame 17 (C11orf17), transcript variant 1, 1 mg
Species:	Human
Expression Host:	HEK293T
Expression cDNA Clone or AA Sequence:	>RC223315 representing NM_020642 Red =Cloning site Green =Tags(s)

MDNCLAAAALNGVDRRSLQRSARLALAVLERAKRRAVDWHALERP K GCMGVLAREAPHLEKQPAAGPQRV
LPGEREERPPTLSASFRTMAEFMDYTSSQCGKYYSSVPEEGATHVYRYHRGESKLHMC LDIGNGQRKDR
KKTSLGPGGSYQISEHAPEASQPAENISKDLYIEVYPGTYSVTVGSNDLTKKTHVAVDSGQSVDLVFPV

TRTRPLEQKLISEEDLAANDILDYKDDDDKV

Tag:	C-Myc/DDK
Predicted MW:	22.9 kDa
Concentration:	>0.05 µg/µL as determined by microplate BCA method
Purity:	> 80% as determined by SDS-PAGE and Coomassie blue staining
Buffer:	25 mM Tris-HCl, 100 mM glycine, pH 7.3, 10% glycerol
Preparation:	Recombinant protein was captured through anti-DDK affinity column followed by conventional chromatography steps.
Note:	For testing in cell culture applications, please filter before use. Note that you may experience some loss of protein during the filtration process.
Storage:	Store at -80°C.
Stability:	Stable for 12 months from the date of receipt of the product under proper storage and handling conditions. Avoid repeated freeze-thaw cycles.
RefSeq:	NP_065693
Locus ID:	56672
UniProt ID:	Q9NQ31



[View online »](#)

RefSeq Size: 1332

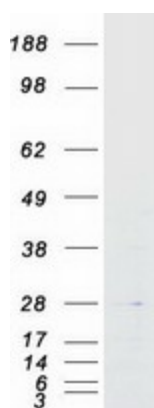
Cytogenetics: 11p15.4

RefSeq ORF: 630

Synonyms: BCA3; C11orf17

Summary: This gene encodes a nuclear protein that interacts with protein kinase A catalytic subunit, and regulates the effect of the cAMP-dependent protein kinase signaling pathway on the NF-kappa-B activation cascade. Alternatively spliced transcript variants have been described for this gene. [provided by RefSeq, Oct 2011]

Product images:



Coomassie blue staining of purified AKIP1 protein (Cat# [TP323315]). The protein was produced from HEK293T cells transfected with AKIP1 cDNA clone (Cat# [RC223315]) using MegaTran 2.0 (Cat# [TT210002]).