

Product datasheet for TP323307

MAP3K15 (NM_001001671) Human Recombinant Protein

Product data:

Product Type:	Recombinant Proteins
Description:	Recombinant protein of human mitogen-activated protein kinase kinase kinase 15 (MAP3K15), 20 µg
Species:	Human
Expression Host:	HEK293T
Expression cDNA Clone or AA Sequence:	>RC223307 representing NM_001001671 Red=Cloning site Green=Tags(s)

MACLTHRNETDARMEFYSLFHKGKAGVQWHDLGSLQLPPRFKRFSLQSSWDYLSKFDERCCFLY
VHDNSDDFQIYFSTEEQCSRFFSLVKEMITNTAGSTVELEGETDGDITLEYEDHDANGERVVLGKGTYGI
VYAGRDLNSQVRIAIKEIPERDSRYSQPLHEEIALHKYLKHRNIVQYLGVSSENGYIKIFMEQVPGGSL
ALLRSKWGPMKEPTIKFYTKQILEGLKYLHENQIVHRDIKGDNLVNTYSGVVKISDFGTSKRLAGVNPC
TETFTGTLQYMAPEIIDQGPRGYGAPADIWSLGCTIEMATSKPPFHELGEQAAMFKVGMFKIHPEIPE
ALSAEARAFILSCFEPDPHKRATTAELLREGFLRQVNVKGGKNRIAFKPSGPRGVVLLALPTQGEPMATSS
SEHGSVSPSDAQPDALEFTRAPRHHLGHLLSVPDESSALEDRGLASSPEDRDQGLFLLRKDSERRAIL
YKILWEEQNQVASNLQECVAQSSEELHLSVGHKIQIIGILRDFIRSPEHRVMATTISKLVLDLDFDSSSI
SQIHLVLFQDAVNKILRNHLIRPHWMFAMDNIIRAVQAAVILPELRAHFPTCETEGVDKDMDEA
EEGYPPATGPGQEAQPHQQHLSLQLGELRQETNRLLEHLVEKEREYQNLLRQTLEQKTQELYHLQLKLS
NCITENPAGPYGQRTDKELIDWLRQLQGADAKTIEKIVEEGYTLSDILNEITKEDLRYLRRLRGLLCRLWS
AVSQYRRAQEASETKDKA

TRTRPLEQKLISEEDLAANDILDYKDDDDKV

Tag:	C-Myc/DDK
Predicted MW:	147.3 kDa
Concentration:	>0.05 µg/µL as determined by microplate BCA method
Purity:	> 80% as determined by SDS-PAGE and Coomassie blue staining
Buffer:	25 mM Tris-HCl, 100 mM glycine, pH 7.3, 10% glycerol
Preparation:	Recombinant protein was captured through anti-DDK affinity column followed by conventional chromatography steps.



[View online »](#)

Note: For testing in cell culture applications, please filter before use. Note that you may experience some loss of protein during the filtration process.

Storage: Store at -80°C.

Stability: Stable for 12 months from the date of receipt of the product under proper storage and handling conditions. Avoid repeated freeze-thaw cycles.

RefSeq: [NP_001001671](#)

Locus ID: 389840

UniProt ID: [Q6ZN16](#)

RefSeq Size: 4633

Cytogenetics: Xp22.12

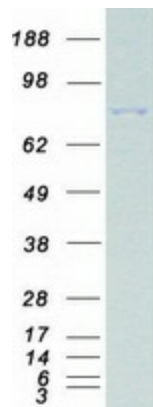
RefSeq ORF: 2364

Synonyms: ASK3; bA723P2.3

Summary: The protein encoded by this gene is a member of the mitogen-activated protein kinase (MAPK) family. These family members function in a protein kinase signal transduction cascade, where an activated MAPK kinase kinase (MAP3K) phosphorylates and activates a specific MAPK kinase (MAP2K), which then activates a specific MAPK. This MAP3K protein plays an essential role in apoptotic cell death triggered by cellular stresses. [provided by RefSeq, Jul 2010]

Protein Families: Druggable Genome, Protein Kinase

Product images:



Coomassie blue staining of purified MAP3K15 protein (Cat# TP323307). The protein was produced from HEK293T cells transfected with MAP3K15 cDNA clone (Cat# [RC223307]) using MegaTran 2.0 (Cat# [TT210002]).