

## Product datasheet for TP323243

### FOXD4L1 (NM\_012184) Human Recombinant Protein

#### Product data:

Product Type:	Recombinant Proteins
Description:	Recombinant protein of human forkhead box D4-like 1 (FOXD4L1), 20 µg
Species:	Human
Expression Host:	HEK293T
Expression cDNA Clone or AA Sequence:	>RC223243 representing NM_012184 Red=Cloning site Green=Tags(s)

MNLPRAERPRSTPQRSRLRSDGEGDKIDVLGEEDEDEVEDEEEASQKFLEQSLQPGLQVARWGGVALP  
REHIEGGPSPDPSEFGTEFRAPPRSAASEDARQPAKPPYSIALITMAILQSPHKRLTLSGICAFISGR  
FPYYRRKFPQNSIRHNSLNDKCFVKIPREPGHPGKGTWYSLDPASQDMFDNGSFLRRRKRFRHQLTP  
GAHLPHFPPLPAAHAALHNPRPGPLLAPALPQVPGAYPNTAPGRRPYALLHPHPPRYLLSAPAYAGA  
PKKAEGADLATPGLPVLQPSLGPQPWEEGKGLASPPGGGCISFSIESIMQGVRGAGTGAAQSLSPATAWS  
YCPQLLRPSSLSDNFAATAAASGGGLRQRLRSHQGRGAGRAPVGRVGA AVS GGG RGL

TRTRPLEQKLISEEDLAANDILDYKDDDDKV

Tag:	C-Myc/DDK
Predicted MW:	43.4 kDa
Concentration:	>0.05 µg/µL as determined by microplate BCA method
Purity:	> 80% as determined by SDS-PAGE and Coomassie blue staining
Buffer:	25 mM Tris-HCl, 100 mM glycine, pH 7.3, 10% glycerol
Preparation:	Recombinant protein was captured through anti-DDK affinity column followed by conventional chromatography steps.
Note:	For testing in cell culture applications, please filter before use. Note that you may experience some loss of protein during the filtration process.
Storage:	Store at -80°C.
Stability:	Stable for 12 months from the date of receipt of the product under proper storage and handling conditions. Avoid repeated freeze-thaw cycles.
RefSeq:	<a href="#">NP_036316</a>
Locus ID:	200350



[View online »](#)

UniProt ID: [Q9NU39](#)

RefSeq Size: 2250

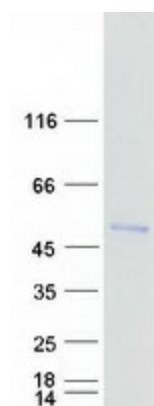
Cytogenetics: 2q14.1

RefSeq ORF: 1224

Synonyms: bA395L14.1; FOXD5

**Summary:** This gene is a member of the forkhead/winged-helix (FOX) family of transcription factors with highly conserved FOX DNA-binding domains. Members of the FOX family of transcription factors are regulators of embryogenesis and may play a role in human cancer. This gene lies in a region of chromosome 2 that surrounds the site where two ancestral chromosomes fused to form human chromosome 2. This region is duplicated elsewhere in the human genome, primarily in subtelomeric and pericentromeric locations, thus multiple copies of this gene have been found. [provided by RefSeq, Jul 2008]

### Product images:



Coomassie blue staining of purified FOXD4L1 protein (Cat# TP323243). The protein was produced from HEK293T cells transfected with FOXD4L1 cDNA clone (Cat# [RC223243]) using MegaTran 2.0 (Cat# [TT210002]).