

## Product datasheet for TP323236L

### C13orf1 (SPRYD7) (NM\_020456) Human Recombinant Protein

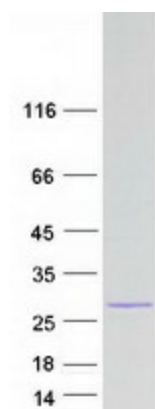
#### Product data:

Product Type:	Recombinant Proteins
Description:	Recombinant protein of human chromosome 13 open reading frame 1 (C13orf1), transcript variant 1, 1 mg
Species:	Human
Expression Host:	HEK293T
Expression cDNA Clone or AA Sequence:	>RC223236 representing NM_020456 <b>Red</b> =Cloning site <b>Green</b> =Tags(s)  MATSVLCCLRCCRDGGTGHIPLKEMPAVQLDTQHMGTDWIVKNGRRICGTGGCLASAPLHQNKSYFEF K IQSTGIWGIGVATQKVNLNQIPLGRDMHSLVMRNDGALYHNNEEKNRLPANS LPQEGDVVGITYDHVEL N VYLNKGNMHCPASGIRGTVPV VYVDD SAILDCQFSEFYHTPPPGFEKILFEQQIF  <b>TRTRPLEQKLISEEDLAANDILDYKDDDDKV</b>
Tag:	C-Myc/DDK
Predicted MW:	21.5 kDa
Concentration:	>0.05 µg/µL as determined by microplate BCA method
Purity:	> 80% as determined by SDS-PAGE and Coomassie blue staining
Buffer:	25 mM Tris-HCl, 100 mM glycine, pH 7.3, 10% glycerol
Preparation:	Recombinant protein was captured through anti-DDK affinity column followed by conventional chromatography steps.
Note:	For testing in cell culture applications, please filter before use. Note that you may experience some loss of protein during the filtration process.
Storage:	Store at -80°C.
Stability:	Stable for 12 months from the date of receipt of the product under proper storage and handling conditions. Avoid repeated freeze-thaw cycles.
RefSeq:	<a href="#">NP_065189</a>
Locus ID:	57213


[View online »](#)

UniProt ID:	<u>Q5W111</u>
RefSeq Size:	3063
Cytogenetics:	13q14.2
RefSeq ORF:	588
Synonyms:	C13orf1; CLLD6
Protein Families:	Druggable Genome

### Product images:



Coomassie blue staining of purified SPRYD7 protein (Cat# [TP323236]). The protein was produced from HEK293T cells transfected with SPRYD7 cDNA clone (Cat# [RC223236]) using MegaTran 2.0 (Cat# [TT210002]).