

Product datasheet for TP323213M

Orosomuroid 2 (ORM2) (NM_000608) Human Recombinant Protein

Product data:

Product Type:	Recombinant Proteins
Description:	Recombinant protein of human orosomuroid 2 (ORM2), 100 µg
Species:	Human
Expression Host:	HEK293T
Expression cDNA Clone or AA Sequence:	>RC223213 protein sequence Red =Cloning site Green =Tags(s)
	MALSWVLTVLSLLPLLEAQIPLCANLVPVPITNATLDRITGKWFYIASAFRNEEYNKSVQEIQATFFYFT PNKTEDTIFLREYQTRQNQCFFYNSSYLVQRENGTVSRYEGGREHVAHLLFLRDTKTLMFSGSYLDDEKNW GLSFYADKPETTKEQLGEFYEALDCLCIPRSDVMYTDWKKDKCEPLEKQHEKERKQEEGES
	TRTRPLEQKLISEEDLAANDILDYKDDDDKV
Tag:	C-Myc/DDK
Predicted MW:	23.4 kDa
Concentration:	>0.05 µg/µL as determined by microplate BCA method
Purity:	> 80% as determined by SDS-PAGE and Coomassie blue staining
Buffer:	25 mM Tris-HCl, 100 mM glycine, pH 7.3, 10% glycerol
Preparation:	Recombinant protein was captured through anti-DDK affinity column followed by conventional chromatography steps.
Note:	For testing in cell culture applications, please filter before use. Note that you may experience some loss of protein during the filtration process.
Storage:	Store at -80°C.
Stability:	Stable for 12 months from the date of receipt of the product under proper storage and handling conditions. Avoid repeated freeze-thaw cycles.
RefSeq:	NP_000599
Locus ID:	5005
UniProt ID:	P19652
RefSeq Size:	844



[View online »](#)

Cytogenetics: 9q32

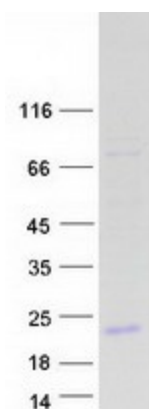
RefSeq ORF: 603

Synonyms: AGP-B; AGP-B'; AGP2

Summary: This gene encodes a key acute phase plasma protein. Because of its increase due to acute inflammation, this protein is classified as an acute-phase reactant. The specific function of this protein has not yet been determined; however, it may be involved in aspects of immunosuppression. [provided by RefSeq, Jul 2008]

Protein Families: Secreted Protein

Product images:



Coomassie blue staining of purified ORM2 protein (Cat# [TP323213]). The protein was produced from HEK293T cells transfected with ORM2 cDNA clone (Cat# [RC223213]) using MegaTran 2.0 (Cat# [TT210002]).