

Product datasheet for **TP323205L**

MMAA (NM_172250) Human Recombinant Protein

Product data:

Product Type:	Recombinant Proteins
Description:	Recombinant protein of human methylmalonic aciduria (cobalamin deficiency) cblA type (MMAA), nuclear gene encoding mitochondrial protein, 1 mg
Species:	Human
Expression Host:	HEK293T
Expression cDNA Clone or AA Sequence:	>RC223205 representing NM_172250 Red =Cloning site Green =Tags(s)

MPMLLPHPHQHFLKGLLRAPFRCYHFIFHSSTHLGSGIPCAQPFNSLGLHCTKWMLLSDGLKRKLCVQTT
LKDHTEGLSDKEQRFVDKLYTGLIQGQRACLAEAITLVESTHSRKKELAQVLLQKVLLYHREQEQSNGK
PLAFRVGLSGPPGAGKSTFIEYFGKMLTERGHKLSVLAVDPSSCTSGGSLLGDKTRMTELSRDMNAYIRP
SPTRGTLGGVTRTTNEAILLCEGAGYDIILLIETVGVGQSEFAVADMVDMFVLLLPPAGGDELQGIKRGII
EMADLVAVTKSDGDLIVPARRIQAEYVSALKLLRKRQVWPKPKVIRISARSGEGISEMWDKMKDFQDLML
ASGELTAKRRKQKQVMMWNLIQESVLEHFRTHPTVREQIPLLEQKVLIGALSPGLAADFLKAFKSRD

TRTRPLEQKLISEEDLAANDILDYKDDDDKV

Tag:	C-Myc/DDK
Predicted MW:	39 kDa
Concentration:	>0.05 µg/µL as determined by microplate BCA method
Purity:	> 80% as determined by SDS-PAGE and Coomassie blue staining
Buffer:	25 mM Tris-HCl, 100 mM glycine, pH 7.3, 10% glycerol
Preparation:	Recombinant protein was captured through anti-DDK affinity column followed by conventional chromatography steps.
Note:	For testing in cell culture applications, please filter before use. Note that you may experience some loss of protein during the filtration process.
Storage:	Store at -80°C.
Stability:	Stable for 12 months from the date of receipt of the product under proper storage and handling conditions. Avoid repeated freeze-thaw cycles.
RefSeq:	<u>NP_758454</u>



[View online »](#)

Locus ID: 166785

UniProt ID: [Q8IVH4](#)

RefSeq Size: 1473

Cytogenetics: 4q31.21

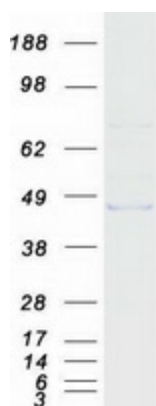
RefSeq ORF: 1254

Synonyms: cblA

Summary: The protein encoded by this gene is involved in the translocation of cobalamin into the mitochondrion, where it is used in the final steps of adenosylcobalamin synthesis. Adenosylcobalamin is a coenzyme required for the activity of methylmalonyl-CoA mutase. Defects in this gene are a cause of methylmalonic aciduria. [provided by RefSeq, Jul 2008]

Protein Families: Druggable Genome

Product images:



Coomassie blue staining of purified MMAA protein (Cat# [TP323205]). The protein was produced from HEK293T cells transfected with MMAA cDNA clone (Cat# [RC223205]) using MegaTran 2.0 (Cat# [TT210002]).