

Product datasheet for **TP323190**

PEAMT (PEMT) (NM_007169) Human Recombinant Protein

Product data:

Product Type: Recombinant Proteins

Description: Recombinant protein of human phosphatidylethanolamine N-methyltransferase (PEMT), nuclear gene encoding mitochondrial protein, transcript variant 2, 20 µg

Species: Human

Expression Host: HEK293T

Expression cDNA Clone or AA Sequence: >RC223190 representing NM_007169
Red=Cloning site **Green**=Tags(s)

MTRLLGYVDPLDPSFVAAVITITFNPLYWNVVARWEHKTRKLSRAFGSPYLACYSLSVTILLNFLRSHC
FTQAMLSQPRMESLDTPAAYSLGLALLGLGVVLVLSFFALGFAGTFLGDYFGILKEARVTVFPFNILDN
PMYWGSTANYLGWAIMHASPTGLLLTVLVALTYIVALLYEFPFTAEIYRQKASGSHKRS

TRTRPLEQKLISEEDLAANDILDYKDDDDKV

Tag: C-Myc/DDK

Predicted MW: 22 kDa

Concentration: >0.05 µg/µL as determined by microplate BCA method

Purity: > 80% as determined by SDS-PAGE and Coomassie blue staining

Buffer: 25 mM Tris-HCl, 100 mM glycine, pH 7.3, 10% glycerol

Preparation: Recombinant protein was captured through anti-DDK affinity column followed by conventional chromatography steps.

Note: For testing in cell culture applications, please filter before use. Note that you may experience some loss of protein during the filtration process.

Storage: Store at -80°C.

Stability: Stable for 12 months from the date of receipt of the product under proper storage and handling conditions. Avoid repeated freeze-thaw cycles.

RefSeq: [NP_009100](#)

Locus ID: 10400

UniProt ID: [Q9UBM1](#)



[View online »](#)

RefSeq Size: 1008

Cytogenetics: 17p11.2

RefSeq ORF: 597

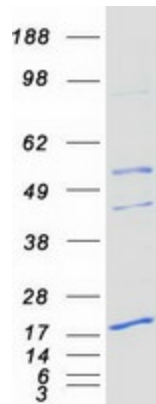
Synonyms: PEAMT; PEMPT; PEMT2; PLMT; PNMT

Summary: Phosphatidylcholine (PC) is the most abundant mammalian phospholipid. This gene encodes an enzyme which converts phosphatidylethanolamine to phosphatidylcholine by sequential methylation in the liver. Another distinct synthetic pathway in nucleated cells converts intracellular choline to phosphatidylcholine by a three-step process. The protein isoforms encoded by this gene localize to the endoplasmic reticulum and mitochondria-associated membranes. Alternate splicing of this gene results in multiple transcript variants encoding different isoforms. [provided by RefSeq, May 2012]

Protein Families: Transmembrane

Protein Pathways: Glycerophospholipid metabolism, Metabolic pathways

Product images:



Coomassie blue staining of purified PEMT protein (Cat# TP323190). The protein was produced from HEK293T cells transfected with PEMT cDNA clone (Cat# [RC223190]) using MegaTran 2.0 (Cat# [TT210002]).