

## Product datasheet for TP323135

### ECE1 (NM\_001397) Human Recombinant Protein

#### Product data:

Product Type:	Recombinant Proteins
Description:	Purified recombinant protein of Homo sapiens endothelin converting enzyme 1 (ECE1), transcript variant 1, 20 µg
Species:	Human
Expression Host:	HEK293T
Expression cDNA Clone or AA Sequence:	>RC223135 representing NM_001397 Red=Cloning site Green=Tags(s)

MRGWVPPVVSALLSALGMSTYKRATLDEEDLVDSLSEGDAYPNGLQVNFHSPRSGQRCWAARTQVEKRLV  
VLVVLLAAGLVACLAALGIQYQTRSPSVCLSEACVSVTSSILSSMDPTVDPCHDFFSYACGGWIKANPVP  
DGHSRWGTFSNLWEHNQAIKHLLNSTASVSEAERKAQVYYRACMNTRIEELRAKPLMELIERLGGWN  
ITGPWAKDNFQDTLQVWTAHYRTSPFFSVVVSADSKNSNSNVIQVDQSGGLPSRDYLLNKTENEKVLTG  
YLNVMVQLGKLLGGGDEEAIKQMQQILDFETALANITIPQEKRRDEELIYHKVTAELQTLAPAINWLP  
FLNTIFYPVEINESEPIVYDKEYLEQISTLINTTDRCLLNNYMIWNLVRKTSSFLDQRFQDADEKFMV  
MYGTTKTCCLPRWKFCVSDTENNLGFALGPMFVKATFAEDSKSIATEIILEIKKAFFESLSTLKWMDDETR  
KSAKEKADAIYNMIGYPNFIMDPKELDKVFNDYTAVPDLYFENAMRFFNFSWRVTADQLRKAPNRDQWSM  
TPPMVNAYYSPTKNEIVFPAGILQAPFYTRSSPKALNFGGIGVVVGHETHAFDDQGREYDKDGNLRPWW  
KNSSVEAFKRQTECMVEQYSNYSVNGEPVNGRHTLGENIADNGGLKAAAYRAYQNWVKNKNGAEHSLPTLGL  
TNNQLFFLGFAQVWCSVRTPESSHEGLITDPHSPSRFRVIGSLSNSKEFSEHFRCPPGSPMNPCHKCEVW

TRTRPLEQKLISEEDLAANDILDYKDDDDKV

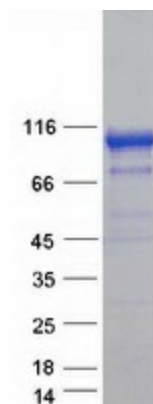
Tag:	C-Myc/DDK
Predicted MW:	87 kDa
Concentration:	>0.05 µg/µL as determined by microplate BCA method
Purity:	> 80% as determined by SDS-PAGE and Coomassie blue staining
Buffer:	25 mM Tris-HCl, 100 mM glycine, pH 7.3, 10% glycerol
Preparation:	Recombinant protein was captured through anti-DDK affinity column followed by conventional chromatography steps.
Note:	For testing in cell culture applications, please filter before use. Note that you may experience some loss of protein during the filtration process.



[View online »](#)

<b>Storage:</b>	Store at -80°C.
<b>Stability:</b>	Stable for 12 months from the date of receipt of the product under proper storage and handling conditions. Avoid repeated freeze-thaw cycles.
<b>RefSeq:</b>	<a href="#">NP_001388</a>
<b>Locus ID:</b>	1889
<b>UniProt ID:</b>	<a href="#">P42892</a> , <a href="#">A1PUP8</a>
<b>RefSeq Size:</b>	2409
<b>Cytogenetics:</b>	1p36.12
<b>RefSeq ORF:</b>	2310
<b>Synonyms:</b>	ECE
<b>Summary:</b>	The protein encoded by this gene is involved in proteolytic processing of endothelin precursors to biologically active peptides. Mutations in this gene are associated with Hirschsprung disease, cardiac defects and autonomic dysfunction. Alternatively spliced transcript variants encoding different isoforms have been noted for this gene.[provided by RefSeq, Sep 2009]
<b>Protein Families:</b>	Druggable Genome, Protease, Transmembrane

### Product images:



Coomassie blue staining of purified ECE1 protein (Cat# TP323135). The protein was produced from HEK293T cells transfected with ECE1 cDNA clone (Cat# [RC223135]) using MegaTran 2.0 (Cat# [TT210002]).