

## Product datasheet for **TP323128M**

### PRSS16 (NM\_005865) Human Recombinant Protein

#### Product data:

**Product Type:** Recombinant Proteins  
**Description:** Recombinant protein of human protease, serine, 16 (thymus) (PRSS16), 100 µg  
**Species:** Human  
**Expression Host:** HEK293T  
**Expression cDNA Clone or AA Sequence:** >RC223128 representing NM\_005865  
**Red**=Cloning site **Green**=Tags(s)

MAVWLAQWLGPLLLVSLWGLLAPASLLRRLGEHIQQFQESSAQLGLSLGPGAAALPKVGVWLEQLLDPFN  
VSDRRSFLQRYWVNDQHWVGQDGPFLHLGGEGSLGPGSVMRHPAALAPAWGALVISLEHRFYGLSIPA  
GGLEMAQLRFLSSRLALADVVSARLALSRLFNISSSSPWICFGGSYAGSLAAWARLKFPHLIFASVASSA  
PVRAVLDFSEYNDVSRSLMSTAIGGSLECRAAVSVAFEVERRLRSGGAAQAALRTELSACGPLGRAEN  
QAEELLGALQALVGGVVQYDGTGAPLSVRQLCGLLGGGNRSHSTPYCGLRRAVQIVLHSLGQKCLSFS  
RAETVAQLRSTEPQLSGVGDRQWLYQTCTEFGFYVTCENPRCPFSQLPALPSQLDLCEQVFGLSALSVAQ  
AVAQTNSYYGGQTPGANKVLFVNGDTPWHVLSVTQALGSSESTLLIRTGSHCLDMAPERPSDPSPLRLG  
RQNIFFQLQTWLKLAKESQIKGEV

**TRTRPLEQKLISEEDLAANDILDYKDDDDKV**

**Tag:** C-Myc/DDK  
**Predicted MW:** 54.9 kDa  
**Concentration:** >0.05 µg/µL as determined by microplate BCA method  
**Purity:** > 80% as determined by SDS-PAGE and Coomassie blue staining  
**Buffer:** 25 mM Tris-HCl, 100 mM glycine, pH 7.3, 10% glycerol  
**Preparation:** Recombinant protein was captured through anti-DDK affinity column followed by conventional chromatography steps.  
**Note:** For testing in cell culture applications, please filter before use. Note that you may experience some loss of protein during the filtration process.  
**Storage:** Store at -80°C.  
**Stability:** Stable for 12 months from the date of receipt of the product under proper storage and handling conditions. Avoid repeated freeze-thaw cycles.



[View online >](#)

RefSeq: [NP\\_005856](#)

Locus ID: 10279

UniProt ID: [Q9NQE7](#)

RefSeq Size: 2722

Cytogenetics: 6p22.1

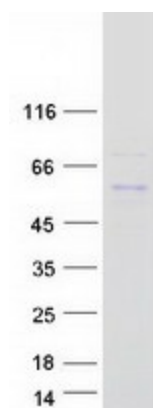
RefSeq ORF: 1542

Synonyms: TSSP

**Summary:** This gene encodes a serine protease expressed exclusively in the thymus. It is thought to play a role in the alternative antigen presenting pathway used by cortical thymic epithelial cells during the positive selection of T cells. The gene is found in the large histone gene cluster on chromosome 6, near the major histocompatibility complex (MHC) class I region. A second transcript variant has been described, but its full length nature has not been determined. [provided by RefSeq, Jul 2008]

**Protein Families:** Druggable Genome, Protease, Transmembrane

### Product images:



Coomassie blue staining of purified PRSS16 protein (Cat# [TP323128]). The protein was produced from HEK293T cells transfected with PRSS16 cDNA clone (Cat# [RC223128]) using MegaTran 2.0 (Cat# [TT210002]).