

Product datasheet for **TP323105L**

KLHL31 (NM_001003760) Human Recombinant Protein

Product data:

Product Type: Recombinant Proteins

Description: Recombinant protein of human kelch-like 31 (Drosophila) (KLHL31), 1 mg

Species: Human

Expression Host: HEK293T

Expression cDNA >RC223105 representing NM_001003760

Clone or AA **Red**=Cloning site **Green**=Tags(s)

Sequence:

MAPKKKIVKKNKGDINEMTIIVEDSPLNKLNALNGLLEGGNGLSCISSELT DASYGPNLLEGLSKMRQEN
FLCDLVIGTKTKSFDVHKSMASCSEYFYNILKKDPSIQRVLDNDISPLGLATVIAYAYTGKLTLSLYTI
GSIISAAVYLQIHTLVKMCSDFLIREMSVENCMYVVNIAETYSLKNAKAAAQKFIRDNFLEFAESDQFMK
LTFEQINELLIDDLQLPSEIVAFQIAMKWLEFDQKRVKYAADLLSNIRFGTISAQDLVNYVQSVPRMMQ
DADCHRLLVDAMNYHLLPYHQNTLQSRRTIRGGCRVLVTVGGRPGLTEKSLSRDILYRDPENGWSKLTE
MPAKSFNQCVAVMDGFLYVAGGEDQNDARNQAKHAVSNFCRYDPRFNTWIHLASMNQKRTHFSLSVFNGL
VYAAGGRNAEGSLASLECYVPSTNQWQPKTPEVARCCHASAVADGRVLVTVGGYIANAYSRSVCAYDPAS
DSWQELPNLSTPRGWHCAVTLSDRVYVMGGSQLGPRGERVDLTVCEYSPATGQWSYAAPLQVGVSTAGV
SALHGRAYLVGGWNEGEKYYKKCIQCFSPELNEWTEDELPEATVGVSCCTLSMPNNVTRESRASSVSSV
PVSI

TRTRPLEQKLISEEDLAANDILDYKDDDDDKV

Tag: C-Myc/DDK

Predicted MW: 70.1 kDa

Concentration: >0.05 µg/µL as determined by microplate BCA method

Purity: > 80% as determined by SDS-PAGE and Coomassie blue staining

Buffer: 25 mM Tris-HCl, 100 mM glycine, pH 7.3, 10% glycerol

Preparation: Recombinant protein was captured through anti-DDK affinity column followed by conventional chromatography steps.

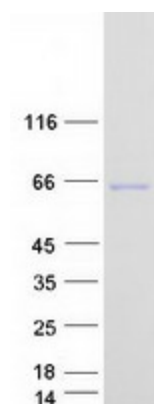
Note: For testing in cell culture applications, please filter before use. Note that you may experience some loss of protein during the filtration process.

Storage: Store at -80°C.



[View online >](#)

Stability:	Stable for 12 months from the date of receipt of the product under proper storage and handling conditions. Avoid repeated freeze-thaw cycles.
RefSeq:	<u>NP_001003760</u>
Locus ID:	401265
UniProt ID:	<u>Q9H511</u>
RefSeq Size:	1905
Cytogenetics:	6p12.1
RefSeq ORF:	1902
Synonyms:	bA345L23.2; BKLHD6; KBTBD1; KLHL
Summary:	Transcriptional repressor in MAPK/JNK signaling pathway to regulate cellular functions. Overexpression inhibits the transcriptional activities of both the TPA-response element (TRE) and serum response element (SRE).[UniProtKB/Swiss-Prot Function]
Protein Families:	Transmembrane

Product images:

Coomassie blue staining of purified KLHL31 protein (Cat# [TP323105]). The protein was produced from HEK293T cells transfected with KLHL31 cDNA clone (Cat# [RC223105]) using MegaTran 2.0 (Cat# [TT210002]).