

## Product datasheet for **TP323105**

### KLHL31 (NM\_001003760) Human Recombinant Protein

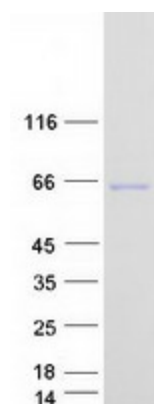
#### Product data:

Product Type:	Recombinant Proteins
Description:	Recombinant protein of human kelch-like 31 (Drosophila) (KLHL31), 20 µg
Species:	Human
Expression Host:	HEK293T
Expression cDNA Clone or AA Sequence:	>RC223105 representing NM_001003760 Red=Cloning site Green=Tags(s)
	<p>MAPKKKIVKKNKGDINEMTIIVEDSPLNKLNALNGLLEGGNGLSCISSELTDASYGPNLLEGLSKMRQEN FLCDLVIGTKTKSFDVHKSMASCSEYFYNILKKDPSIQRVLDNDISPLGLATVIAYAYTGKLTLSLYTI GSIISAAVYLQIHTLVKMCSDFLIREMSVENCMYVVNIAETYSLKNAAAAQKFIRDNFLEFAESDQFMK LTFEQINELLIDDLQLPSEIVAFQIAMKWLEFDQKRVKYAADLLSNIRFGTISAQDLVNYVQSVPRMMQ DADCHRLLVDAMNYHLLPYHQNTLQSRRTIRGGCRVLVTVGGRPGLTEKSLSRDILYRDPENGWSKLTE MPAKSFNQCVAVMDGFLYVAGGEDQNDARNQAKHAVSNFCRYDPRFNTWIHLASMNQKRTHFSLSVFNGL VYAAGGRNAEGSLASLECYVPSTNQWQPKTPEVARCCHASAVADGRVLVTGGYIANAYSRSVCAYDPAS DSWQELPNLSTPRGWHCAVTLSDRVYVMGGSQLGPRGERVDLTVCEYSPATGQWSYAAPLQVGVSTAGV SALHGRAYLVGGWNEGEKKYKCKIQCFSPELNEWTEDELPEATVGVSCCTLSMPNNVTRESRASSVSSV PVSI</p> <p>TRTRPLEQKLISEEDLAANDILDYKDDDDKV</p>
Tag:	C-Myc/DDK
Predicted MW:	70.1 kDa
Concentration:	>0.05 µg/µL as determined by microplate BCA method
Purity:	> 80% as determined by SDS-PAGE and Coomassie blue staining
Buffer:	25 mM Tris-HCl, 100 mM glycine, pH 7.3, 10% glycerol
Preparation:	Recombinant protein was captured through anti-DDK affinity column followed by conventional chromatography steps.
Note:	For testing in cell culture applications, please filter before use. Note that you may experience some loss of protein during the filtration process.
Storage:	Store at -80°C.



[View online »](#)

<b>Stability:</b>	Stable for 12 months from the date of receipt of the product under proper storage and handling conditions. Avoid repeated freeze-thaw cycles.
<b>RefSeq:</b>	<a href="#">NP_001003760</a>
<b>Locus ID:</b>	401265
<b>UniProt ID:</b>	<a href="#">Q9H511</a>
<b>RefSeq Size:</b>	1905
<b>Cytogenetics:</b>	6p12.1
<b>RefSeq ORF:</b>	1902
<b>Synonyms:</b>	bA345L23.2; BKLHD6; KBTBD1; KLHL
<b>Summary:</b>	Transcriptional repressor in MAPK/JNK signaling pathway to regulate cellular functions. Overexpression inhibits the transcriptional activities of both the TPA-response element (TRE) and serum response element (SRE).[UniProtKB/Swiss-Prot Function]
<b>Protein Families:</b>	Transmembrane

**Product images:**

Coomassie blue staining of purified KLHL31 protein (Cat# TP323105). The protein was produced from HEK293T cells transfected with KLHL31 cDNA clone (Cat# [RC223105]) using MegaTran 2.0 (Cat# [TT210002]).