

Product datasheet for **TP322995M**

Cytochrome P450 2A6 (CYP2A6) (NM_000762) Human Recombinant Protein

Product data:

Product Type: Recombinant Proteins

Description: Recombinant protein of human cytochrome P450, family 2, subfamily A, polypeptide 6 (CYP2A6), 100 µg

Species: Human

Expression Host: HEK293T

Expression cDNA Clone or AA Sequence: >RC222995 protein sequence
Red=Cloning site **Green**=Tags(s)

MLASGMLLVALLVCLTVMVLMMSVWQQRKSKGKLPFGPTPLPFIGNYLQLNTEQMYNSLMKISERYGPVFT
IHLGPRRVVLCGHDAVREALVDQAEFFSGRGEQATFDWVFKGYGVVFSNGERAKQLRRFSIATLRDFGV
GKRGIEERIQEEAGFLIDALRGTTGGANIDPTFFLSRTVSNVISSIVFGDRFDYKDKFSLLRMMLGIFQ
FTSTSTGQLYEMFSSVMKHLPGPQQQAFQLLQGLEDFIAKKVEHNQRTLDPNSPRDFIDSFLIRMQEEEK
NPNTEFYLNLMVMTTLNLFIGGTETVSTTLRYGFLMLMKHPEVEAKVHEEIDRVIGKNRQPKFEDRAKMP
YMEAVIHEIQRFQDVIPMSLARRVKKDTKFRDFFLPKGTEVYPMGLGSLRDPSSFFSNPQDFNPQHFLNEK
GQFKKSDAFVPPFSIGKRNCFCGEGLARMELFFFTVMQNFRLKSSQSPKDDIDVSPKHVGFATIPRNYTMS
FLPR

TRTRPLEQKLISEEDLAANDILDYKDDDDKV

Tag: C-Myc/DDK

Predicted MW: 56.3 kDa

Concentration: >0.05 µg/µL as determined by microplate BCA method

Purity: > 80% as determined by SDS-PAGE and Coomassie blue staining

Buffer: 25 mM Tris-HCl, 100 mM glycine, pH 7.3, 10% glycerol

Preparation: Recombinant protein was captured through anti-DDK affinity column followed by conventional chromatography steps.

Note: For testing in cell culture applications, please filter before use. Note that you may experience some loss of protein during the filtration process.

Storage: Store at -80°C.



[View online »](#)

Stability: Stable for 12 months from the date of receipt of the product under proper storage and handling conditions. Avoid repeated freeze-thaw cycles.

RefSeq: [NP_000753](#)

Locus ID: 1548

UniProt ID: [P11509](#)

RefSeq Size: 1775

Cytogenetics: 19q13.2

RefSeq ORF: 1482

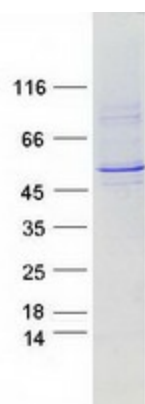
Synonyms: CPA6; CYP2A; CYP2A3; CYP11A6; P450C2A; P450PB

Summary: This gene, CYP2A6, encodes a member of the cytochrome P450 superfamily of enzymes. The cytochrome P450 proteins are monooxygenases which catalyze many reactions involved in drug metabolism and synthesis of cholesterol, steroids and other lipids. This protein localizes to the endoplasmic reticulum and its expression is induced by phenobarbital. The enzyme is known to hydroxylate coumarin, and also metabolizes nicotine, aflatoxin B1, nitrosamines, and some pharmaceuticals. Individuals with certain allelic variants are said to have a poor metabolizer phenotype, meaning they do not efficiently metabolize coumarin or nicotine. This gene is part of a large cluster of cytochrome P450 genes from the CYP2A, CYP2B and CYP2F subfamilies on chromosome 19q. The gene was formerly referred to as CYP2A3; however, it has been renamed CYP2A6. [provided by RefSeq, Jul 2008]

Protein Families: Druggable Genome, P450, Transmembrane

Protein Pathways: Caffeine metabolism, Drug metabolism - cytochrome P450, Drug metabolism - other enzymes, Metabolic pathways, Retinol metabolism

Product images:



Coomassie blue staining of purified CYP2A6 protein (Cat# [TP322995]). The protein was produced from HEK293T cells transfected with CYP2A6 cDNA clone (Cat# [RC222995]) using MegaTran 2.0 (Cat# [TT210002]).