

Product datasheet for TP322989M

ABL2 (NM_001100108) Human Recombinant Protein

Product data:

Product Type:	Recombinant Proteins
Description:	Recombinant protein of human v-abl Abelson murine leukemia viral oncogene homolog 2 (arg, Abelson-related gene) (ABL2), transcript variant c, 100 µg
Species:	Human
Expression Host:	HEK293T
Expression cDNA Clone or AA Sequence:	>RC222989 representing NM_001100108 Red=Cloning site Green=Tags(s)

MVLGTVLLPPNSYGRDQDTS LCCLCTEASESALPDLTDHFASCVEDGFEGDKTGGSSPEALHRPYGCDVE
PQALNEAIRWSSKENLLGATESDPNLFVALYDFVASGDNTLSITKGEKLRVLGYNQNGEWSEVRSKNGQG
WVPSNYITPVNSLEKHSWYHGPVSRSAEYLLSSLINGSFLVRESESSPGQLSISLRYEGRVYHYRINTT
ADGKVVYTAESRFSTLAELVHHHSTVADGLVTTLHYPAPKCNKPTVYGVSPHDKWEMERTDITMKHKL
GGQYGEVYVGVWKKYSLTAVKTLKEDTMEVEEFLKEAAVMKEIKHPNLVQLLGVCTLEPPFYIVTEYMP
YGNLLDYLRECNREEVTAVLLYMATQISSAMEYLEKKNFIHRDLAARNCLVGENHVVKVADFGLSRLMT
GDTYTAHAGAKFPIKWTAPESLAYNTFSIKSDVWAFGVLLWEIATYGMSPYPGIDLSQVYDLLEKGYRME
QPEGCPPKVEELMRACWKWSPADRPSFAETHQAFETMFHDSSISEEVAEELGRAASSSSVWYPLRPLPIL
PSKTRTLKKQVENKENIEGAQDATENSASSLAPGFIRGAQASSGSPALPRKQDKSPSSLEDAKETCFT
RDRKGGFFSSFMKRNAPTPPKRSSSFREMENQPHKKYELTGNFSSVASLQHADGFSFPAQQEANLVPP
KCYGGSFAQRNLCNDDGGGGGGSGTAGGGWSGITGFFTPRLIKTLGLRAGKPTASDDTSKPFPRSNSTS
SMSSGLPEQDRMAMTLPRNCQRSKLQLERTVSTSSQPEENVDRANDMLPKKSEESAAPSRERPKAKLLPR
GATALPLRTPSGDLAITEKDPPGVGVAGVAAAPKKGKEKNGGARLGMAGVPEDGEQPGWVSPAKAAPVLPT
THNHKVPVLISPTLKHTPADVQLIGTDSQGNKFKLLSEHQVTSSGDKDRPRRVKPKCAPPVPMRLLQH
PSICSDPTEEPTALTAGQSTSETQEGGKKAALGAVPISGKAGRPVMPVPPQVPLPTSSISPAKMANGTAGT
KVALRKTKQAAEKISADKISKEALLECADLLSSALTEPVPNSQLVDTGHQLLDYCSGYVDCIPQTRNKFA
FREAVSKLELSLQELQVSSAAAGVPGTNPVNLNLLSCVQEISDVVQR

TRTRPLEQKLISEEDLAANDILDYKDDDDKV

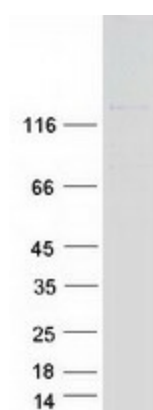
Tag:	C-Myc/DDK
Predicted MW:	126.5 kDa
Concentration:	>0.05 µg/µL as determined by microplate BCA method
Purity:	> 80% as determined by SDS-PAGE and Coomassie blue staining



[View online »](#)

Buffer:	25 mM Tris-HCl, 100 mM glycine, pH 7.3, 10% glycerol
Preparation:	Recombinant protein was captured through anti-DDK affinity column followed by conventional chromatography steps.
Note:	For testing in cell culture applications, please filter before use. Note that you may experience some loss of protein during the filtration process.
Storage:	Store at -80°C.
Stability:	Stable for 12 months from the date of receipt of the product under proper storage and handling conditions. Avoid repeated freeze-thaw cycles.
RefSeq:	NP_001093578
Locus ID:	27
UniProt ID:	P42684
RefSeq Size:	11927
Cytogenetics:	1q25.2
RefSeq ORF:	3501
Synonyms:	ABLL; ARG; FLJ22224; FLJ31718; FLJ41441
Summary:	This gene encodes a member of the Abelson family of nonreceptor tyrosine protein kinases. The protein is highly similar to the c-abl oncogene 1 protein, including the tyrosine kinase, SH2 and SH3 domains, and it plays a role in cytoskeletal rearrangements through its C-terminal F-actin- and microtubule-binding sequences. This gene is expressed in both normal and tumor cells, and is involved in translocation with the ets variant 6 gene in leukemia. Multiple alternatively spliced transcript variants encoding different protein isoforms have been found for this gene. [provided by RefSeq, Nov 2009]
Protein Families:	Druggable Genome, Protein Kinase
Protein Pathways:	ErbB signaling pathway, Viral myocarditis

Product images:



Coomassie blue staining of purified ABL2 protein (Cat# [TP322989]). The protein was produced from HEK293T cells transfected with ABL2 cDNA clone (Cat# [RC222989]) using MegaTran 2.0 (Cat# [TT210002]).