

## Product datasheet for TP322985M

### SPTLC1 (NM\_006415) Human Recombinant Protein

#### Product data:

Product Type:	Recombinant Proteins
Description:	Recombinant protein of human serine palmitoyltransferase, long chain base subunit 1 (SPTLC1), transcript variant 1, 100 µg
Species:	Human
Expression Host:	HEK293T
Expression cDNA Clone or AA Sequence:	>RC222985 representing NM_006415 Red=Cloning site Green=Tags(s)

MATATEQWVLVEMVQALYEAPAYHLILEGILILWIIRLLFSKTYKLQERSDLTVKEKEELIEEWQPEPLV  
PPVPKDHDPALNYNIVSGPPSHKTVVNGKECINFASFNGLLDNPRVKAALASLKKYGVGTGCGPRGFYF  
TFDVHLDLEDRLAKFMKTEEAIISYGFATIASAIPAYSKRGDIVFDRAACFAIQKGLQASRSDIKLFK  
HNDMADLERLLKEQEIEDQKNPRKARVTRRFIVVEGLYMNTGTICPLPELVKLYKYKARIFLEESLSFG  
VLGEHGRGVTEHYGINIDDIDLISANMENALASIGGFCCGRSFVIDHQRLSGQGYCFSASLPPLAAAAI  
EALNIMEENPGIFAVLKEKCGQIHKALQGISGLKVVGESLSPAFHLQLEESTGSREQDVRLLQEIVDQCM  
NRSIALTQARYLEKEEKCLPPPSIRVVVTVEQTEEELERAASTIKEVAQAVLL

TRTRPLEQKLISEEDLAANDILDYKDDDDKV

Tag:	C-Myc/DDK
Predicted MW:	52.6 kDa
Concentration:	>0.05 µg/µL as determined by microplate BCA method
Purity:	> 80% as determined by SDS-PAGE and Coomassie blue staining
Buffer:	25 mM Tris-HCl, 100 mM glycine, pH 7.3, 10% glycerol
Preparation:	Recombinant protein was captured through anti-DDK affinity column followed by conventional chromatography steps.
Note:	For testing in cell culture applications, please filter before use. Note that you may experience some loss of protein during the filtration process.
Storage:	Store at -80°C.
Stability:	Stable for 12 months from the date of receipt of the product under proper storage and handling conditions. Avoid repeated freeze-thaw cycles.



[View online »](#)

RefSeq: [NP\\_006406](#)

Locus ID: 10558

UniProt ID: [O15269](#), [A0A024R277](#), [Q6NUL7](#)

RefSeq Size: 2780

Cytogenetics: 9q22.31

RefSeq ORF: 1419

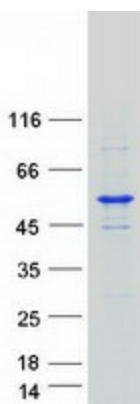
Synonyms: HSN1; HSN1; LBC1; LCB1; SPT1; SPTI

**Summary:** This gene encodes a member of the class-II pyridoxal-phosphate-dependent aminotransferase family. The encoded protein is the long chain base subunit 1 of serine palmitoyltransferase. Serine palmitoyltransferase converts L-serine and palmitoyl-CoA to 3-oxosphinganine with pyridoxal 5'-phosphate and is the key enzyme in sphingolipid biosynthesis. Mutations in this gene were identified in patients with hereditary sensory neuropathy type 1. Alternatively spliced variants encoding different isoforms have been identified. Pseudogenes of this gene have been defined on chromosomes 1, 6, 10, and 13. [provided by RefSeq, Jul 2013]

**Protein Families:** Druggable Genome, Transmembrane

**Protein Pathways:** Metabolic pathways, Sphingolipid metabolism

### Product images:



Coomassie blue staining of purified SPTLC1 protein (Cat# [TP322985]). The protein was produced from HEK293T cells transfected with SPTLC1 cDNA clone (Cat# [RC222985]) using MegaTran 2.0 (Cat# [TT210002]).