

Product datasheet for **TP322911M**

PRDM11 (NM_020229) Human Recombinant Protein

Product data:

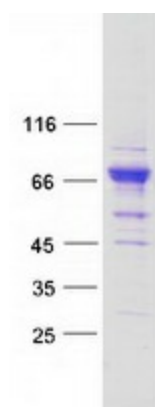
Product Type:	Recombinant Proteins
Description:	Recombinant protein of human PR domain containing 11 (PRDM11), 100 µg
Species:	Human
Expression Host:	HEK293T
Expression cDNA Clone or AA Sequence:	>RC222911 representing NM_020229 Red =Cloning site Green =Tags(s)
	<p>MLKMAEPIASLMIVECRACLRCSPFLYQREKDRMTENMKECLAQTNAAVGDMVTWVWTEVCSPLRDQEY GQPCSRRPDSSAMEVEPKKLGKRDIVPKSFQVDFWFCESCQEYFVDECPNHGPPVFSVSDTPVPGIP DRAALTIPQGMVVKDTSGESDVRCVNEVIPKGHIFGPYEGQISTQDKSAGFFSWLIVDKNNRYKSIDGS DETKANWMRYVVISREEREQNLLAFQHSEIRYFRACRDIRPGEWLRVWYSEDYMKRLHMSQETIHRNLA RGEKRLQREKSEQVLDPEDLRGPIHLSVLRQGKSPYKRGFDEGDVHPQAKKKKIDLIFKDVLEASLESA KVEAHLALSTSLVIRKVPKYQDDAYSQCATTMTHGVQNIQTQEGEDWKVPQGVSKEPGQLEDEEEEPS SFKADSPAEASLASDPHELPTTSFCPNCIRLKKKRELQAELDMLKSGKLPPEPVLPPQVLELPEFSDPA GKLWVMRLLEGRVRSGLCGG</p> <p>TRTRPLEQKLISEEDLAANDILDYKDDDDKV</p>
Tag:	C-Myc/DDK
Predicted MW:	57.7 kDa
Concentration:	>0.05 µg/µL as determined by microplate BCA method
Purity:	> 80% as determined by SDS-PAGE and Coomassie blue staining
Buffer:	25 mM Tris-HCl, 100 mM glycine, pH 7.3, 10% glycerol
Preparation:	Recombinant protein was captured through anti-DDK affinity column followed by conventional chromatography steps.
Note:	For testing in cell culture applications, please filter before use. Note that you may experience some loss of protein during the filtration process.
Storage:	Store at -80°C.
Stability:	Stable for 12 months from the date of receipt of the product under proper storage and handling conditions. Avoid repeated freeze-thaw cycles.



[View online »](#)

RefSeq:	NP_064614
Locus ID:	56981
UniProt ID:	Q9NQV5
RefSeq Size:	2229
Cytogenetics:	11p11.2
RefSeq ORF:	1533
Synonyms:	PFM8
Summary:	May be involved in transcription regulation.[UniProtKB/Swiss-Prot Function]
Protein Families:	Druggable Genome

Product images:



Coomassie blue staining of purified PRDM11 protein (Cat# [TP322911]). The protein was produced from HEK293T cells transfected with PRDM11 cDNA clone (Cat# [RC222911]) using MegaTran 2.0 (Cat# [TT210002]).