

Product datasheet for TP322869

PICK1 (NM_012407) Human Recombinant Protein

Product data:

Product Type:	Recombinant Proteins
Description:	Recombinant protein of human protein interacting with PRKCA 1 (PICK1), transcript variant 1, 20 µg
Species:	Human
Expression Host:	HEK293T
Expression cDNA Clone or AA Sequence:	>RC222869 protein sequence Red =Cloning site Green =Tags(s)

MFADLDYDIEEDKLGIPVPGKVTLQKDAQNLIGISIGGGAQYCPCLYIVQVFDNTPAALDGTVAAGDEI
TGVNGRSIKGKTKVEVAKMIQEVKGEVTIHYNKLQADPKQGMSLDIVLKKVKHRLVENMSSGTADALGLS
RAILCNDGLVKRLEELERTAELYKGMTEHTKNLLRAFVELSQTHRAFGDVFSVIGVREPQPAASEAFVKF
ADAHRSIEKFGIRLLKTIKPLMTDLNNTYLNKAIPDTRLTIKKYLDVKFEYLSYCLKVKEMDDEEYSCIAL
GEPLYRVSTGNYEYRLILRCRQEARARFSQMRKDVLEKMELLDQKHVQDIVFQLQRLVSTMSKYYNDCYA
VLRDADVFPPIEVDLAHTTLAYGLNQEEFTDGEEEEEEEEDTAAGEPSRDTRGAAGPLDKGGSWCDS

TRTRPLEQKLISEEDLAANDILDYKDDDDKV

Tag:	C-Myc/DDK
Predicted MW:	46.4 kDa
Concentration:	>0.05 µg/µL as determined by microplate BCA method
Purity:	> 80% as determined by SDS-PAGE and Coomassie blue staining
Buffer:	25 mM Tris-HCl, 100 mM glycine, pH 7.3, 10% glycerol
Preparation:	Recombinant protein was captured through anti-DDK affinity column followed by conventional chromatography steps.
Note:	For testing in cell culture applications, please filter before use. Note that you may experience some loss of protein during the filtration process.
Storage:	Store at -80°C.
Stability:	Stable for 12 months from the date of receipt of the product under proper storage and handling conditions. Avoid repeated freeze-thaw cycles.
RefSeq:	<u>NP_036539</u>



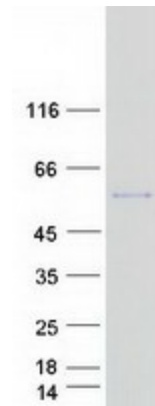
[View online »](#)

Locus ID: 9463
UniProt ID: [Q9NRD5](#), [A0A024R1J5](#)
RefSeq Size: 2224
Cytogenetics: 22q13.1
RefSeq ORF: 1245
Synonyms: PICK; PRKCABP

Summary: The protein encoded by this gene contains a PDZ domain, through which it interacts with protein kinase C, alpha (PRKCA). This protein may function as an adaptor that binds to and organizes the subcellular localization of a variety of membrane proteins. It has been shown to interact with multiple glutamate receptor subtypes, monoamine plasma membrane transporters, as well as non-voltage gated sodium channels, and may target PRKCA to these membrane proteins and thus regulate their distribution and function. This protein has also been found to act as an anchoring protein that specifically targets PRKCA to mitochondria in a ligand-specific manner. Three transcript variants encoding the same protein have been found for this gene. [provided by RefSeq, Jul 2008]

Protein Families: Druggable Genome

Product images:



Coomassie blue staining of purified PICK1 protein (Cat# TP322869). The protein was produced from HEK293T cells transfected with PICK1 cDNA clone (Cat# [RC222869]) using MegaTran 2.0 (Cat# [TT210002]).