

## Product datasheet for **TP322838L**

### SR1 (SRI) (NM\_198901) Human Recombinant Protein

#### Product data:

Product Type:	Recombinant Proteins
Description:	Recombinant protein of human sorcin (SRI), transcript variant 2, 1 mg
Species:	Human
Expression Host:	HEK293T
Expression cDNA	>RC222838 representing NM_198901
Clone or AA Sequence:	Red=Cloning site Green=Tags(s)

MQYGGAPGGPAFPGQTQDPLYGYFAAVAGQDGQIDADELQRCLTQSGIAGGYKPFNLETCLMVSMMLDRD  
MSGTMGFNEFKELWAVLNGWRQHFISFDTRSGTVDPQELQKALTTMGFRLSPQAVNSIAKRYSTNGKIT  
FDDYIACCVKLRALTDSEFRRTAQGGVNFYDDDFIQCVMMSV

TRTRPLEQKLISEEDLAANDILDYKDDDDKV

Tag:	C-Myc/DDK
Predicted MW:	20.2 kDa
Concentration:	>0.05 µg/µL as determined by microplate BCA method
Purity:	> 80% as determined by SDS-PAGE and Coomassie blue staining
Buffer:	25 mM Tris-HCl, 100 mM glycine, pH 7.3, 10% glycerol
Preparation:	Recombinant protein was captured through anti-DDK affinity column followed by conventional chromatography steps.
Note:	For testing in cell culture applications, please filter before use. Note that you may experience some loss of protein during the filtration process.
Storage:	Store at -80°C.
Stability:	Stable for 12 months from the date of receipt of the product under proper storage and handling conditions. Avoid repeated freeze-thaw cycles.
RefSeq:	<a href="#">NP_944490</a>
Locus ID:	6717
UniProt ID:	<a href="#">P30626</a>
RefSeq Size:	2012



[View online »](#)

Cytogenetics: 7q21.12

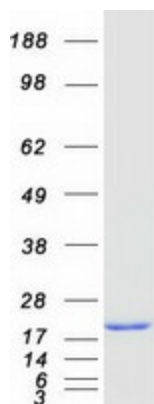
RefSeq ORF: 549

Synonyms: CP-22; CP22; SCN; V19

**Summary:** This gene encodes a calcium-binding protein with multiple E-F hand domains that relocates from the cytoplasm to the sarcoplasmic reticulum in response to elevated calcium levels. In addition to regulating intracellular calcium homeostasis it also modulates excitation-contraction coupling in the heart. Alternative splicing results in multiple transcript variants encoding distinct proteins. Multiple pseudogenes exist for this gene. [provided by RefSeq, Mar 2012]

**Protein Families:** Druggable Genome

### Product images:



Coomassie blue staining of purified SRI protein (Cat# [TP322838]). The protein was produced from HEK293T cells transfected with SRI cDNA clone (Cat# [RC222838]) using MegaTran 2.0 (Cat# [TT210002]).