

## Product datasheet for **TP322831L**

### WFDC3 (NM\_080614) Human Recombinant Protein

#### Product data:

Product Type:	Recombinant Proteins
Description:	Recombinant protein of human WAP four-disulfide core domain 3 (WFDC3), 1 mg
Species:	Human
Expression Host:	HEK293T
Expression cDNA Clone or AA Sequence:	>RC222831 representing NM_080614 <b>Red</b> =Cloning site <b>Green</b> =Tags(s)
	 MMLSCLFLLKALLALGSLESWITAGEHAKEGECPPDKNPCKELCQGDELCPAEQKCCTTGCGRICRDIPK GRKRDCPRVIRKQSLKRCITDKTCPGVKKCTLGCNKSCVPIKQKLAIEFGGECPADPLPCEELCDGD ASCPQGHKCCSTGCGRTCLGDIEGGRGGDCPKVLVGLCIVGCVMDENCQAGEKCKKSGCGRFCVPPVLP KLTMNPNWTVRSDSELEIPVP  <b>TRTRPLEQKLISEEDLAANDILDYKDDDDKV</b>
Tag:	C-Myc/DDK
Predicted MW:	22 kDa
Concentration:	>0.05 µg/µL as determined by microplate BCA method
Purity:	> 80% as determined by SDS-PAGE and Coomassie blue staining
Buffer:	25 mM Tris-HCl, 100 mM glycine, pH 7.3, 10% glycerol
Preparation:	Recombinant protein was captured through anti-DDK affinity column followed by conventional chromatography steps.
Note:	For testing in cell culture applications, please filter before use. Note that you may experience some loss of protein during the filtration process.
Storage:	Store at -80°C.
Stability:	Stable for 12 months from the date of receipt of the product under proper storage and handling conditions. Avoid repeated freeze-thaw cycles.
RefSeq:	<a href="#">NP_542181</a>
Locus ID:	140686
UniProt ID:	<a href="#">Q8IUB2</a>



[View online »](#)

RefSeq Size: 1000

Cytogenetics: 20q13.12

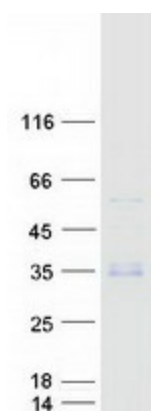
RefSeq ORF: 693

Synonyms: dj447F3.3; WAP14

**Summary:** This gene encodes a member of the WAP-type four-disulfide core (WFDC) domain family. The WFDC domain, or WAP signature motif, contains eight cysteines forming four disulfide bonds at the core of the protein, and functions as a protease inhibitor. The encoded protein contains four WFDC domains. Most WFDC genes are localized to chromosome 20q12-q13 in two clusters: centromeric and telomeric. This gene belongs to the telomeric cluster. Alternatively spliced transcript variants have been observed but their full-length nature has not been determined. [provided by RefSeq, Jul 2008]

**Protein Families:** Secreted Protein

### Product images:



Coomassie blue staining of purified WFDC3 protein (Cat# [TP322831]). The protein was produced from HEK293T cells transfected with WFDC3 cDNA clone (Cat# [RC222831]) using MegaTran 2.0 (Cat# [TT210002]).