

## Product datasheet for **TP322785**

### **PAX5 (NM\_016734) Human Recombinant Protein**

#### **Product data:**

**Product Type:** Recombinant Proteins  
**Description:** Recombinant protein of human paired box 5 (PAX5), 20 µg  
**Species:** Human  
**Expression Host:** HEK293T  
**Expression cDNA Clone or AA Sequence:** >RC222785 representing NM\_016734  
**Red**=Cloning site **Green**=Tags(s)

MDLEKNYPTPRTSRTGHGGVNLGGVFNVRPLPDVVRQRIVELAHQGVPCDISRQLRVSHGCVSKILG  
RYYETGSIKPGVIGGSKPKVATPKVVEKIAEYKRQNPTMFAWEIRDLLAERVCDNDTVPSVSSINRIIR  
TKVQQPPNQVPASSHSIVSTGSVTQVSSVSTDSAGSSYSISGILGITSPSADTNKRKRDEGIQESPVPN  
GHSLPGRDFLRKQMRGDLFTQQQLEVLDRVFERQHYSIDIFTTTEPIKPEQTTEYSAMASLAGGLDDMKAN  
LASPTPADIGSSVPGPQSYPIVTGRDLASTTLPGYPPHVPPAGQGSYSAPTTLTGMVPGSEFSGSPYSHQP  
YSSYNDSWRFNPGLLGSPYYSAARGAAPAAATAYDRH

**TR**TRPLEQKLISEEDLAANDILDYKDDDDKV

**Tag:** C-Myc/DDK  
**Predicted MW:** 42 kDa  
**Concentration:** >0.05 µg/µL as determined by microplate BCA method  
**Purity:** > 80% as determined by SDS-PAGE and Coomassie blue staining  
**Buffer:** 25 mM Tris-HCl, 100 mM glycine, pH 7.3, 10% glycerol  
**Preparation:** Recombinant protein was captured through anti-DDK affinity column followed by conventional chromatography steps.  
**Note:** For testing in cell culture applications, please filter before use. Note that you may experience some loss of protein during the filtration process.  
**Storage:** Store at -80°C.  
**Stability:** Stable for 12 months from the date of receipt of the product under proper storage and handling conditions. Avoid repeated freeze-thaw cycles.  
**RefSeq:** [NP\\_057953](#)  
**Locus ID:** 5079



[View online »](#)

UniProt ID: [Q02548](#)

RefSeq Size: 3650

Cytogenetics: 9p13.2

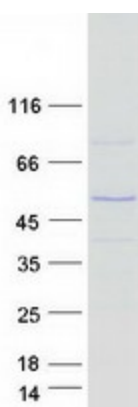
RefSeq ORF: 1173

Synonyms: ALL3; BSAP

**Summary:** This gene encodes a member of the paired box (PAX) family of transcription factors. The central feature of this gene family is a novel, highly conserved DNA-binding motif, known as the paired box. Paired box transcription factors are important regulators in early development, and alterations in the expression of their genes are thought to contribute to neoplastic transformation. This gene encodes the B-cell lineage specific activator protein that is expressed at early, but not late stages of B-cell differentiation. Its expression has also been detected in developing CNS and testis and so the encoded protein may also play a role in neural development and spermatogenesis. This gene is located at 9p13, which is involved in t(9;14)(p13;q32) translocations recurring in small lymphocytic lymphomas of the plasmacytoid subtype, and in derived large-cell lymphomas. This translocation brings the potent E-mu enhancer of the IgH gene into close proximity of the PAX5 promoter, suggesting that the deregulation of transcription of this gene contributes to the pathogenesis of these lymphomas. Alternative splicing results in multiple transcript variants encoding different isoforms. [provided by RefSeq, Jul 2013]

**Protein Families:** Transcription Factors

### Product images:



Coomassie blue staining of purified PAX5 protein (Cat# TP322785). The protein was produced from HEK293T cells transfected with PAX5 cDNA clone (Cat# [RC222785]) using MegaTran 2.0 (Cat# [TT210002]).