

Product datasheet for TP322774

p38 (MAPK14) (NM_139014) Human Recombinant Protein

Product data:

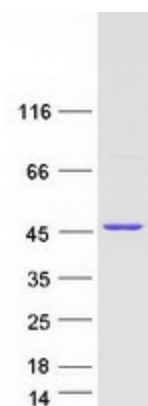
Product Type:	Recombinant Proteins
Description:	Recombinant protein of human mitogen-activated protein kinase 14 (MAPK14), transcript variant 4, 20 µg
Species:	Human
Expression Host:	HEK293T
Expression cDNA Clone or AA Sequence:	>RC222774 representing NM_139014 Red =Cloning site Green =Tags(s)
	MSQERPTFYRQELNKTIVPEPERYQNLSPVGSYGAYGSVCAAFDTKTGLRVAVKLSRPFQSIHAKRTYR ELRLLKHKHENVIGLLDVFTPARSLEEFNDVYLVTHLMGADLNNIVKCQKLTDDHVQFLIYQILRGLKY IHSADIIHRDLKPSNLAVNEDCELKILDFGLARHTDDEMTGYVATRWYRAPEIMLNWMHYNQTVDIWSVG CIMAELLTGRTLFPDTHIDQLKILRLVGTPGAELLKKISSESLSTCWRRCLYWTQIRELQRPKPLHMP TLLSTTILMMNQWPILMISPLKAGTSL
	TR TRPLEQKLISEEDLAANDILDYKDDDDKV
Tag:	C-Myc/DDK
Predicted MW:	35.3 kDa
Concentration:	>0.05 µg/µL as determined by microplate BCA method
Purity:	> 80% as determined by SDS-PAGE and Coomassie blue staining
Buffer:	25 mM Tris-HCl, 100 mM glycine, pH 7.3, 10% glycerol
Preparation:	Recombinant protein was captured through anti-DDK affinity column followed by conventional chromatography steps.
Note:	For testing in cell culture applications, please filter before use. Note that you may experience some loss of protein during the filtration process.
Storage:	Store at -80°C.
Stability:	Stable for 12 months from the date of receipt of the product under proper storage and handling conditions. Avoid repeated freeze-thaw cycles.
RefSeq:	NP_620583
Locus ID:	1432



[View online »](#)

UniProt ID:	Q16539
RefSeq Size:	3679
Cytogenetics:	6p21.31
RefSeq ORF:	921
Synonyms:	CSBP; CSBP1; CSBP2; CSPB1; EXIP; Mxi2; p38; p38ALPHA; PRKM14; PRKM15; RK; SAPK2A
Summary:	<p>The protein encoded by this gene is a member of the MAP kinase family. MAP kinases act as an integration point for multiple biochemical signals, and are involved in a wide variety of cellular processes such as proliferation, differentiation, transcription regulation and development. This kinase is activated by various environmental stresses and proinflammatory cytokines. The activation requires its phosphorylation by MAP kinase kinases (MKKs), or its autophosphorylation triggered by the interaction of MAP3K7IP1/TAB1 protein with this kinase. The substrates of this kinase include transcription regulator ATF2, MEF2C, and MAX, cell cycle regulator CDC25B, and tumor suppressor p53, which suggest the roles of this kinase in stress related transcription and cell cycle regulation, as well as in genotoxic stress response. Four alternatively spliced transcript variants of this gene encoding distinct isoforms have been reported. [provided by RefSeq, Jul 2008]</p>
Protein Families:	Druggable Genome, Protein Kinase
Protein Pathways:	Amyotrophic lateral sclerosis (ALS), Epithelial cell signaling in Helicobacter pylori infection, Fc epsilon RI signaling pathway, GnRH signaling pathway, Leukocyte transendothelial migration, MAPK signaling pathway, Neurotrophin signaling pathway, NOD-like receptor signaling pathway, Progesterone-mediated oocyte maturation, RIG-I-like receptor signaling pathway, T cell receptor signaling pathway, Toll-like receptor signaling pathway, VEGF signaling pathway

Product images:



Coomassie blue staining of purified MAPK14 protein (Cat# TP322774). The protein was produced from HEK293T cells transfected with MAPK14 cDNA clone (Cat# [RC222774]) using MegaTran 2.0 (Cat# [TT210002]).